



European Association
of Organic Geochemists

IMOGG 2023

31ST INTERNATIONAL MEETING ON
ORGANIC GEOCHEMISTRY

MONTPELLIER · FRANCE

10-15 SEPTEMBER 2023

PROGRAMME

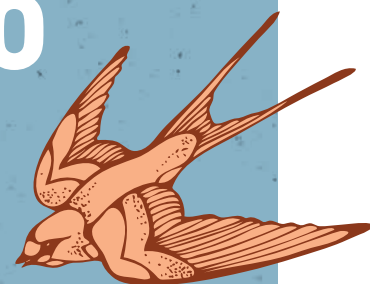
MAIN SPONSOR



WWW.IMOGGCONFERENCE.ORG



WELCOME TO IMOG 2023



Dear Colleagues,

I am delighted to welcome you to the 31st International Meeting on Organic Geochemistry (IMOG). During the 2021 online meeting we had over 400 delegates joining us from 41 different countries across the globe. After the success of 2021, we are more confident than ever that our community will evolve and continue to grow.

As with each IMOG, 2023 will stand on its own as an innovative conference, bringing together the best minds in the field of organic matter cycles over geological and modern time scales as well as integrated paleoenvironmental and climatic studies. In addition, our industry colleagues continue to bring tools and understanding needed to improve the full life cycle activities in exploration, production, decommissioning as well as new relevant energies.

We are happy once again to have the opportunity to discuss, network, and develop amongst friends and peers. I am certain that the conference will once again push the boundaries of the field and facilitate new ways for connecting our community.

On behalf of EAOG, I welcome you to Montpellier!

Pim van Bergen
EAOG Chair

EAOG BOARD

Pim van Bergen*	Shell UK
Bart van Dongen	University of Manchester
Vincent Grossi	University of Lyon
Arnaud Huguet	Sorbonne Université
Heinz Wilkes	Carl von Ossietzky University
Courtney Turich	Echantillon Advising
Steve Rowland	University of Plymouth
Darci Rush	NIOZ

*EAOG Chair

SCIENTIFIC COMMITTEE

Courtney Turich*	Echantillon Advising
Sabine Lengger	Silicon Austria Labs (SAL)
Alon Amrani	Hebrew University of Jerusalem
Svenja Erdmenn	Baker Hughes
Francois Gelin	TotalEnergies
Kai-Uwe Hinrichs	University of Bremen
Sabine Mehay	SLB
Richard Orban	MOL
Maria Fernanda Romero Sarmiento	IFP Energies Nouvelles
Rienk Smittenburg	Stockholm University

*Scientific Committee Chair

ABOUT IMOG 2023

The 31st International Meeting on Organic Geochemistry (IMOG 2023) is taking place in Montpellier, France, from 10- 15 September 2023. For the fourth time the conference will be organised by the European Association of Organic Geochemists in cooperation with the European Association of Geoscientists and Engineers (EAGE). The official biennial conference of the European Association of Organic Geochemists (EAOG) is the largest meeting on Organic Geochemistry.

The guiding principle of the IMOG is to encourage presentation, communication and discussion of research results carried out in academia and industry in the fields of Organic Geochemistry with topics ranging from biogeochemistry to petroleum geochemistry.

The conference welcomes over 250 participants from all over the world, with 75+ oral presentations and more than 190 poster presentations. In addition, an exhibition is also being organised to facilitate knowledge transfer and business among the geochemical community.

VENUE

IMOG 2023 is held in Montpellier, a charming city in the south of France. It is a historic city with a vibrant city center that offers numerous opportunities for exploration and leisure. The city has a lively atmosphere and pedestrian-friendly streets. With its rich cultural heritage, stunning architectural landmarks, and delightful gastronomy, Montpellier promises an enchanting experience for all attendees. The venue is centrally located with excellent transportation links making it easily accessible.

LE CORUM: Palais des Congrès - Opéra Berloiz

Esplanade Charles De Gaulle
34000 Montpellier, France

Registration Desk Opening Hours

Sunday, 10 September 2023	17:00 - 20:00
Monday, 11 September 2023	09:00 - 17:30
Tuesday, 12 September 2023	08:00 - 17:30
Wednesday, 13 September 2023	08:00 - 16:30
Thursday, 14 September 2023	09:00 - 17:30
Friday, 15 September 2023	08:00 - 12:00

Conference Overview

Conference & Exhibition	10-15 September 2023
Icebreaker Reception	10 September 2023
Cultural Evening	12 September 2023
Conference Evening	13 September 2023



PLENARY	
09:10	Opening Ceremony
Plenary 01 Session Chair: D. Rush (Royal Netherlands Inst. for Sea Research (NIOZ))	
09:30	UNRAVELING MICROBIAL BIOMARKER SIGNATURES OBTAINED BY MASS SPECTROMETRY IMAGING IN HYDROTHERMAL SEDIMENT - J. Groninga ^{1*} , W. Liu ¹ , J. Wendt ¹ , L. Wörmer ¹ , A. Teske ² , K. Hinrichs ¹ ¹ Marum – Center For Marine Environmental Sciences; ² University of North Carolina at Chapel Hill
09:55	Evidence for subsurface warming in the western tropical Atlantic during the glacial terminations of the last 300 kyr - L. Rouyer-Denimal ^{1*} , A. Govin ² , I. Bouloubassi ³ , A.L.S. Albuquerque ⁴ , T.T. Nguyen Tu ¹ , C. Anquetil ¹ , V. Klein ³ , A. Huguet ¹ ¹ METIS - Sorbonne Université; ² LSCE - UVSQ; ³ LOCEAN - Sorbonne Université; ⁴ Universidade Federal Fluminense
10:20	Coffee Break (Mon AM)
Plenary 02 Session Chair: V. Grossi (CNRS - University of Lyon - ENS)	
10:45	MOLECULAR FOSSIL INVENTORY IN MICROBIAL CARBONATES AND SPONGES OF THE DEEP FORE REEF OF MAYOTTE AND MOHÉLI, COMORO ISLANDS - J.M. Maak ^{1*} , D. Birgel ¹ , J. Reitner ² , E. Gischler ³ , W. Dullo ⁴ , W. Foster ¹ , J. Peckmann ¹ ¹ Universität Hamburg; ² Universität Göttingen; ³ Goethe Universität Frankfurt am Main; ⁴ GEOMAR
11:10	HOW SOLID IS THE CHUNG GAS ISOTOPE PLOT - X. Xia ¹ , Y. Gao ¹ ¹ The University of Texas at San Antonio
11:35	INTRAMOLECULAR 13C DISTRIBUTION OF CYANOBACTERIAL FATTY ACIDS MEASURED BY ESI-ORBITRAP-MS - M. Julien ¹ , T. Bauersachs ² , C. Hallmann ^{1,3*} ¹ Gfz Potsdam; ² Christian-Albrechts-University; ³ University of Potsdam (Institute of Geosciences & Institute of Chemistry)
12:00	Lunch Break (Mon)
Poster session Monday	
13:30	RECOGNITION OF EARLY PERMIAN WILDFIRES IN THE COAL-BEARING RIO BONITO FORMATION, CANDIOTA COALFIELD, BRAZIL - M.M. Bicca ^{1*} , W. Kalkreuth ¹ , M. Guerra-Sommer ¹ , I. Degani-Schmidt ¹ ¹ Ufrgs
	MULTIPLY-SUBSTITUTED CARBON ISOTOPE ANALYSIS OF PHENANTHRENE IN THE POSIDONIA SHALE USING APPI-ORBITRAP MS - M. Noah ^{1*} , S. Pötzt ¹ , C. Karger ¹ , C. Hallmann ¹ ¹ GFZ – German Research Center for Geosciences
	LIPID BIOMARKERS ARCHIVED IN GUANO ACCUMULATIONS FROM FRENCH CAVES - J. Jacob ^{1*} , C. Gauthier ¹ , L. Bruxelles ² ¹ Université Paris-Saclay; ² TRACES (UMR 5608)
	GEOCHEMICAL VARIATION ON SEDIMENTARY ORGANIC MATTER AFFECTED BY IGNEOUS INTRUSIONS, PARANÁ BASIN, BRAZIL - J.F. Sanabria Vargas ^{1*} , M. Müller Bicca ¹ , H. Anzolin ¹ , M. Vitkosky Santos ¹ , G. Avila Dias Link ¹ , W. Kalkreuth ¹ , T. Freitas Da Silva ¹ ¹ Federal University of Rio Grande do Sul
	DISTRIBUTION OF BIOMARKERS IN SURFACE SEDIMENTS FROM THE SABRINA COAST, EAST ANTARCTICA - Z. Li ^{1,2,3*} , J. Müller ⁴ , H. Huang ¹ , S. George ² ¹ China University of Geosciences (Beijing); ² Macquarie University; ³ Durham University; ⁴ Alfred Wegener Institute
	ENVIRONMENTAL LIPIDOMIC BASELINE SURVEY OF OCEANIC SHALLOW BURIED SEDIMENTS OF SCOTIAN SLOPE OF ATLANTIC CANADA - N. Ahangarian ^{1*} , J. Bentley ¹ , N. Morrison ² , A. MacDonald ² , M. Fowler ³ , C. Campbell ⁴ , C. Hubert ⁵ , G.T. Ventura ¹ ¹ Saint Mary's University; ² Nova Scotia Department of Natural Resources and Renewables; ³ Applied Petroleum Technology Ltd; ⁴ Geological Survey of Canada-Atlantic; ⁵ University of Calgary
	TEMPERATURE RECONSTRUCTION OF THE LAST TWO INTERGLACIALS BASED ON BR-GDGTS IN THE PADUL PALAEO LAKE (SOUTHERN IBERIAN) - M. Rodrigo-Gámiz ^{1*} , A. López-Avilés ¹ , A. García-Alix ¹ , G. Jiménez-Moreno ¹ , J. Lattaud ² , T. Eglinton ² , J. Camuera ³ , M.J. Ramos-Román ⁴ , S. Anderson ⁵ , J. Sinninghe Damsté ⁶ ¹ University of Granada; ² Swiss Federal Institute of Technology (ETHZ); ³ CSIC-University of Granada; ⁴ Universidad del Atlántico Medio; ⁵ School of Earth and Sustainability; ⁶ NIOZ Royal Netherlands Institute of Sea Research and Utrecht University
	Oil Characteristics Of Cenomanian Reservoirs Along East Arabia - H. Akbar ^{1*} , A. Al-Khamiss ¹ , S. Al-Enezi ¹ , A. Al-Sharqawi ¹ ¹ Kuwait Oil Company
	TESTING THE TEMPERATURE DEPENDENCY OF BRGDGTS ON DIFFERENT TIMESCALES (DAYS-WEEKS-MONTHS-CENTURIES) - F. Ajalloeian ^{1*} , S.N. Ladd ² , N. Dubois ³ , C.J. Schubert ³ , M.A. Lever ⁴ , T.I. Eglinton ¹ , C. De Jonge ¹ ¹ ETH Zurich; ² University of Basel; ³ Eawag - Swiss Federal Institute of Aquatic Science and Technology; ⁴ University of Texas at Austin
	COMPREHENSIVE GEOCHEMICAL SURVEY OF MARINE MICROBIAL COMMUNITIES WITHIN DEEP OCEAN SCOTIAN SLOPE COLD SEEPS - G. Oueslati ^{1*} , N. Ahangarian ¹ , N. Morrison ² , J. Bentley ¹ , A. Macdonald ³ , C. Campbell ³ , C. Hubert ⁴ , T. Ventura ¹ ¹ Saint Mary's University; ² Department of Energy and Mines; ³ Department of Natural Resources and Renewables; ⁴ University of Calgary
	CLIMATIC AND BIOGEOCHEMICAL CHANGES ACROSS THE HOLOCENE RECORDED IN AN ALPINE PEATLAND IN CENTRAL ASIA - J. Sun ^{1*} , D. Spindler ¹ , Z. Rao ² , J. Blewett ³ , D. Naafs ¹ ¹ University Of Bristol; ² Hunan Normal University; ³ Harvard University
	THE EFFECT OF SAMPLE PREPARATION ON THE INTERPRETATION OF PYROLYSIS-BASED ORGANIC MATTER ANALYSES. - Z. Zhao ^{1,2*} , R. Littke ² , L. Zieger ² ¹ Research Institute of Petroleum Exploration and Development; ² Aachen University

Poster session Monday

13:30	Organic matter composition and distribution in a simulated estuarine salinity gradient - P. Martinez Sosa ^{1*} , F. Peterse ¹ , J. Middelburg ¹ ¹ Utrecht University
	THE MILLIMETER-SCALE HETEROGENEITY OF SHALE - S. Yang ^{1*} ¹ China University Of Petroleum
	ANALYSIS OF SATURATED HYDROCARBON USING GCxGC/TOFMS IN OIL SAMPLES OF THE GULF OF MEXICO - M.M. Alves Junior ¹ , T.L.D. Santos ¹ , T.D.O. Reis ¹ , C.Y.D.S. Yara dos Santos Siqueira ^{1*} ¹ UFRJ ^a
	DECADAL VARIATION OF POLYCYCLIC AROMATIC HYDROCARBONS IN AN AREA CONTAMINATED BY COAL GANGUE DUMP - Y. Yang ^{1,2*} , Q. Zhao ¹ , J. Wang ¹ , Y. Sun ¹ , M. Zhang ² , B. Liu ¹ ¹ Hebei University Of Engineering; ² Key Laboratory of Resource Exploration Research of Hebei Province
	THE USE OF MOLECULAR MARKERS TO TRACE ALTERATIONS IN SOIL ORGANIC MATTER COMPOSITION IN A 130-YEAR-OLD AFFORESTATION SEQUENCE - T.C. Speckert ^{1*} , G.L.B. Wiesenbergl ¹ University of Zurich
	A COMPARATIVE STUDY ON THE GEOCHEMICAL CHARACTERISTICS OF MUDSTONE AND DUMP SAMPLES FROM MARITSA IZTOK BASIN, BULGARIA - Z. Milakovska ^{1*} , M. Stefanova ² , G. Vladislavov ³ ¹ Geological Institute At Bulgarian Academy Of Sciences; ² Institute of Organic Chemistry with Centre of Phytochemistry at the Bulgarian Academy of Sciences; ³ Troyanovo-3 Mine OOD at Mini Maritsa Iztok EAD
	SULFURIZED DITERPENOIDS IN AMBER: OCCURRENCE, FORMATION AND GEOCHEMICAL SIGNIFICANCE - A. Fradet ^{1*} , L. Lenen ¹ , L. Magnin ¹ , L. Singer ¹ , B. Gomez ² , P. Adam ¹ , P. Schaeffer ¹ ¹ University of Strasbourg; ² University of Lyon 1
	ALLOCATING MULTI-WELL OIL PRODUCTION USING GEOCHEMICAL FINGERPRINTING: A CASE STUDY - T. Garlichs ^{1*} , P. Franco ² , R. Galimberti ² ¹ Wintershall Dea Norge AS; ² Geolog Technologies Srl
	GEOCHEMICAL ANALYSIS OF FEEDSTOCK SAMPLES TO IMPROVE SUPPLY CHAIN TRANSPARENCY FOR BIODIESEL PRODUCTION - J. Weijers ¹ , A. Bergesch ² , J. Pureveen ² , K. Van Zuilen ² , T. Evans ^{2*} , G. Spaak ² , S. Van den Boorn ² ¹ Shell International Exploration & Production Inc; ² Shell Global Solutions International B.V.
	Effects of biodegradation followed by reburial/re-maturation processes on the characteristics of light hydrocarbons - Y. Huang ¹ , Y. Liao ^{1*} , T. Xu ² , Y. Wang ¹ , P. Peng ¹ ¹ Guangzhou Institute of Geochemistry (Chinese Academy of Sciences); ² China University of Petroleum (Beijing) at Karamay
	GEOCHEMICAL CHARACTERISTICS AND EXPLORATION SIGNIFICANCE OF ULTRA-DEEP SINIAN OIL AND GAS FROM WELL TASHEN 5, TARIM BASIN, CHINA - Z. Cao ¹ , A. Ma ^{2*} , H. Li ¹ , Q. Xu ¹ , Q. Pan ¹ , K. Shang ¹ , F. Feng ² , Y. Liu ¹ ¹ Northwest Petroleum Oilfield Company; ² Petroleum Exploration & Production Research Institute
	GEOCHEMICAL CHARACTERIZATION OF THE BARRA VELHA FORMATION PETROLEUM SYSTEM ELEMENTS (PRE-SALT, SANTOS BASIN, BRAZIL) - R. Lenz ^{1*} , J. Schmidt ¹ , T. Silva ² , T. Dos Santos ¹ , E. Cembrani ¹ , S. Altenhofen ¹ , A. Schrank ¹ , W. Freitas ¹ , A. Maraschin ¹ , R. Barili ¹ , F. Dalla Vecchia ¹ ¹ Institute of Petroleum and Natural Resources - PUCRS; ² Federal University of Rio Grande do Sul
	DISTRIBUTION OF LONG-CHAIN DIOLS IN THE BALTIC SEA AND ITS APPLICATION IN PALEOENVIRONMENTAL RECONSTRUCTION - B. Yang ^{1*} , H.L. Filipsson ² , K. Ljung ² , S. Schouten ^{1,3} ¹ Royal Netherlands Institute for Sea Research (NIOZ); ² Lund University; ³ Utrecht University
	USEFUL OR NOT USEFUL? THE CHALLENGES AND BENEFITS OF RANEY-NICKEL DESULFURIZATION APPLIED TO MODERN SEDIMENTS - J. Ma ^{1*} , R. Summons ¹ ¹ Massachusetts Institute of Technology
	AUTOMATED BLIGH AND DYER EXTRACTION OF SEDIMENTS - N. Bale ^{1*} , A. Mets ¹ , S. Schouten ^{1,2} , E. Hopmans ¹ ¹ Royal Netherlands Inst. for Sea Research (NIOZ); ² Utrecht University
	INTERLABORATORY COMPARISON OF BRANCHED GDGT ANALYSIS AND PROXIES IN SOILS AND EXTRACTS - F. Peterse ^{1*} , C. De Jonge ² , K. Nierop ¹ , T. Blattmann ² ¹ Utrecht University; ² ETH Zürich
	ENHANCED REMINERALIZATION (PRIMING) OF ORGANIC POLLUTANTS IN ANOXIC COASTAL MARINE SEDIMENTS - C. Castillo-Ilabaca ^{1*} , M.H. Gutiérrez ^{2,3} , M. Aranda ^{3,4} , G. Jessen ^{3,5} , K. Henríquez ⁶ , C. Fernández ^{2,3} , P. Lincoñir ² , L. Núñez ^{2,3} , S. Pantoja-Gutiérrez ^{2,3} ¹ Programa de Postgrado en Oceanografía - Departamento de Oceanografía - Universidad de Concepción; ² Departamento de Oceanografía - Universidad de Concepción; ³ Centro de Investigación Oceanográfica COPAS Coastal (Min. de CTCI) - Universidad de Concepción; ⁴ Pontificia Universidad Católica de Chile; ⁵ Instituto de Ciencias Marinas y Limnológicas - Universidad Austral de Chile; ⁶ Departamento de Ciencias y Tecnología de los Alimentos - Universidad de Concepción
	HIGH-RESOLUTION ORGANIC GEOCHEMISTRY REVEALS UNUSUAL BIOMARKERS IN THE PIMENTEIRAS FORMATION, PARNAÍBA BASIN - BRAZIL - V. B. Pereira ^{1*} , L. L. Martins ^{2,3} , B. Q. Araújo ⁴ , H. J.P.S. Ribeiro ² , G. F. da Cruz ² , D. A. Azevedo ¹ ¹ Federal University of Rio de Janeiro; ² North Fluminense State University; ³ Federal University of Ceará; ⁴ Federal University of Espírito Santo
	USING LIPID BIOMARKERS TO RECONSTRUCT PAST VARIATIONS IN METHANE CYCLE IN NORTH CAMEROON: THE NGAOUNDABA PEAT RECORD - V. Schaaff ^{1*} , V. Grossi ¹ , M. Makou ¹ , S. Ansanay-Alex ¹ , B. Eddhif ¹ , P. Deschamps ² , B. Hamelin ² , Y. Garcin ² , D. Sebag ³ , B. Ngounou Ngatcha ⁴ , G. Ménot ¹ ¹ Université Lyon; ² CEREGE - Aix Marseille Université; ³ IFP Energies Nouvelles; ⁴ LAMISE - University of Ngaoundéré
	STIMULATION OF MICROBIAL LIFE IN HYPER-ARID ATACAMA DESERT SOILS AFTER A RAIN EXPERIMENT - C. Sager ¹ , A. Airo ¹ , F. Arens ¹ , D. Schulze-Makuch ¹ , K. Mangelsdorf ^{2*} ¹ Technical University Berlin; ² GFZ Potsdam German Research Centre for Geosciences

Poster session Monday

13:30	<p>DISTRIBUTION OF HOPANOIDS AND STEROIDS IN PALEOCENE SEDIMENTS FROM THE SOUTH PACIFIC OCEAN - L. Jiang^{1,2*}, S. George², B. Ausin³, Y. Wang¹ ¹Guangzhou Institute of Geochemistry; ²Macquarie University; ³Salamanca University</p> <p>EVALUATING THE INCORPORATION OF AGED CARBON INTO THE MARINE CARBON CYCLE AT SHALLOW HYDROTHERMAL SYSTEMS - J.M. Maa^{1*}, M. Elvert¹, S.I. Bühring¹, Y. Lin², E. Schefuß¹ ¹University of Bremen; ²National Sun Yat-Sen University</p> <p>Correlation of marine oils and source rock by Diamondoids in Tarim Basin: Implication for the characteristic of the Yuertusi Formation - J. Su¹, X. Wang¹, M. Moldowan¹, Y. Fang¹, S. Ma^{1*}, C. Yang¹ ¹Research Institute of Petroleum Exploration and Development - Petrochina</p> <p>Efficient sequestration of methane-derived carbon in surface seafloor - Y. Che^{1*}, Y. Zhou², M. Yu¹, Z. Chen², N. Wang¹, M. Bao¹, H. Li¹, W. Wu¹, H. Ma¹, R. Bao¹ ¹Ocean University of China; ²Guangzhou Marine Geological Survey</p> <p>LIGNIN DECOMPOSITION IN SUBALPINE SOILS DURING A ONE-YEAR LABORATORY INCUBATION EXPERIMENT - D. Püntener^{1*}, T.C. Speckert¹, G.L.B. Wiesenbergl¹ ¹University of Zurich</p> <p>Exceptional soft tissue and molecular preservation in the world's most productive freshwater lagerstätten - A. Elson^{1*}, J. Whiteside², J. Bevitt³, L. Grande⁴, K. Grice¹ ¹Curtin University; ²San Diego State University; ³Australian Centre for Neutron Scattering; ⁴The Field Museum</p> <p>INVESTIGATING BACTERIAL 3-HYDROXY FATTY ACIDS AS NEW INDICATORS OF PAST AIR TEMPERATURE IN LAKE SEDIMENTS FROM NEW ZEALAND - S. Naeher^{1*}, S. Rosenberg², J.A. Bendle³, K. Yamoah⁴, J. Pearman⁵, B. Duncan², M.J. Vandergoes¹ ¹GNS Science; ²Victoria University of Wellington; ³University of Birmingham; ⁴University of York; ⁵Cawthron Institute</p> <p>BURIAL OF SEDIMENT ORGANIC MATTER ON THE EAST SIBERIAN ARCTIC SHELF: THE ROLE OF TERRESTRIAL INPUT AND SEA-ICE EVOLUTION - L. Hu^{1,3*}, Y. Zhang¹, X. Shi^{2,3}, J. Dong^{2,3}, J. Ye^{1,3}, A. Astakhov ¹Ocean University of China; ²First Institute of Oceanography (Ministry of Natural Resources); ³Qingdao National Laboratory for Marine Science and Technology</p> <p>STUDY ON THE DIFFERENCE OF SULFUR-CONTAINING POLYCYCLIC AROMATIC HYDROCARBONS IN HIGH SULFUR COALS WITH DIFFERENT SULFUR FORMS - Q. Zhao^{1*}, Y. Yang¹, B. Liu¹, S. Qin², Y. Sun¹ ¹Hebei University Of Engineering; ²Key Laboratory of Resource Exploration Research of Hebei Province</p> <p>Tracking methane fluxes using intact polar and core lipids in an aridity transect of the Okavango Delta (Botswana) - J. Lattaud^{1*}, M. Gondwe², D. Rush³, E. Hopmans³, C. Helfter⁴, C. De Jonge¹ ¹ETH Zurich; ²Okavango Research Institute (ORI); ³Royal NIOZ; ⁴UK Centre for Ecology and Hydrology</p> <p>Fluctuations in the marine nitrogen cycle of the Benguela Upwelling System over the last 140 ka - R. Granger^{1*}, Z. Erdem¹, K. Ungerhofer¹, P. Kraal¹, D. Rush¹ ¹NIOZ Royal Netherlands Institute for Sea Research</p> <p>GEOCHEMICAL CHARACTERISTICS AND ORIGIN OF THE EDIACARAN DENGYING FORMATION SOLID BITUMEN IN THE SICHUAN BASIN, CHINA - X. Fang^{1*} ¹Guangzhou Institute Of Geochemistry (CAS)</p> <p>HYDROCARBON SOURCE CORRELATION AND GENESIS OF PETROLEUM OF UPLIFT AND PERICLINAL AREA IN XIHU SAG, EAST CHINA SEA BASIN - L. Cao^{1,2*}, Y. Guo³, J. Zhao^{1,2} ¹Xi'an Shiyou University; ²China National Oil and Gas Exploration and Development Company (CNODC); ³Shaanxi Key Laboratory of Petroleum Accumulation Geology</p> <p>D DISTRIBUTIONS OF METHYLNAPHTHALENES OF THE LIGHT/CONDENSATE OILS IN TAZHONG AREA IN TARIM BASIN, NW CHINA - B. Cheng^{1,2*}, Z. Wei^{1,2}, H. Zhang³, Z. Liao^{1,2} ¹Guangzhou Institute Of Geochemistry (Chinese Academy Of Sciences); ²CAS Center for Excellence in Deep Earth Science; ³PetroChina Tarim Oilfield Company</p> <p>Preservation conditions and dissipation mechanisms of shale gas under different burial conditions in Silurian Shale of South China - G. Teng¹, N. Qiu², L. Yu³, A. Pan³, C. Tao³, B. Shen³, K. Xu³, Q. Feng³, R. Fang^{1*}, C. Zhang¹ ¹China Geological Survey; ²China University of Petroleum (Beijing); ³SINOPEC Petroleum Exploration and Production Research Institute</p> <p>ASSESSMENT OF HYDROCARBONS POTENTIAL OF LITHOFACIAL UNITS IN OUTER CARPATHIAN USING VARIOUS PYROLYSIS METHODS - I.M. Matyasik^{1*}, M. Labus², M. Kania¹, M. Janiga¹ ¹Oil & Gas Institute-National Research Institute; ²Silesian University of Technology</p> <p>Influence of mineral associations on terrestrial organic matter transfer and dispersal in the northern Gulf of Mexico - Y. Yedema^{1*}, J. Trabucho Alexandre¹, J. Vonk², F. Sangiorgi¹, F. Peterse¹ ¹Utrecht University; ²Vrije Universiteit Amsterdam</p>
--------------	---

Oral Presentations | Monday 11 September

PASTEUR ROOM		EINSTEIN ROOM	
Biomarkers Across Time Session Chair: A. Huguet (CNRS / Sorbonne Université)		Petroleum Geochemistry Case Studies Session Chair: C. Zhu (Exxonmobil)	
15:00	THE PRESERVATION OF CELLULOSE IN FOSSIL WOOD – IMPLICATIONS FROM ORGANIC GEOCHEMICAL STUDY OF FOSSIL AND MODERN WOOD - J. Kus ¹ , M. Dolezych ² , W. Schneider ³ , J. Hower ⁴ , T. Hofmann ⁵ , E. Visiné Rajczi ⁵ , R. Sachsenhofer ⁶ , A. Bechtel ⁶ , K. Stojanovic ^{7*} , D. Zivotic ⁷ , I. Kojic ⁷ , M. Mastalerz ⁸ , T. Graupner ¹ , W. Lukens ⁹ , L. Donaldson ¹⁰ ¹ Federal Institute for Geosciences and Natural Resources; ¹⁰ Scion; ² Senckenberg Naturhistorische Sammlungen Dresden; ³ Alte Berliner Straße 13d; ⁴ University of Kentucky; ⁵ University of Sopron (Institute of Chemistry); ⁶ Montanuniversität Leoben; ⁷ University of Belgrade; ⁸ Indiana University; ⁹ James Madison University	15:00	INFLUENCE OF CRETACEOUS OCEANIC ANOXIC EVENTS ON DEPOSITION AND CHEMOSTRATIGRAPHY OF MARINE SHALE SOURCE ROCKS IN ARCTIC ALASKA - P. Botterell ^{1*} , M. Sanders ¹ , D. Houseknecht ¹ , J.M. Moldowan ² , R. Lease ¹ , R. Stokes ¹ , W. Rouse ¹ , K. Whidden ¹ , J. Dumoulin ¹ , R. Smith ¹ , C. DeVera ¹ ¹ U.S. Geological Survey; ² Biomarker Technologie Inc.
15:20	COMPOUND-SPECIFIC ISOTOPE ANALYSIS ON STERANES AND HOPANES AS A TOOL TO DECONVOLVE THE PRECAMBRIAN STABLE CARBON ISOTOPE RECORD - I. Bobrovskiy ^{1*} , Y. Isaji ² , N.O. Ogawa ² , N. Ohkouchi ² , E. Golubkova ³ , J.J. Brocks ⁴ , A. Sessions ⁵ ¹ GFZ-Potsdam; ² Japan Agency for Marine-Earth Science and Technology; ³ Institute of Precambrian Geology and Geochronology RAS; ⁴ The Australian National University; ⁵ California Institute of Technology	15:20	PALEO AND PRESENT-DAY FLUIDS REVEAL BASIN-SCALE RECONSTRUCTION OF COMPLEX FLUID HISTORY (CENOMANIAN TO TODAY, MOZAMBIQUE) - C. Turich ^{1*} ¹ Echantillon Advising
15:40	BIOMARKERS DIFFERENTIATE TRUE FERNS FROM SEED FERNS & PRESENT A UNIQUE PRESERVATION MODE IN SIDERITE CONCRETIONS (MAZON CREEK) - M. Tripp ^{1*} , L. Schwark ^{1,2} , P. Greenwood ¹ , J. Brocks ³ , P. Mayer ⁴ , J. Whiteside ⁵ , J. Wittry ⁴ , W. Rickard ¹ , K. Grice ¹ ¹ Curtin University; ² Christian-Albrechts-University of Kiel; ³ The Australian National University; ⁴ The Field Museum; ⁵ San Diego State University	15:40	DIAMONDOID-BIOMARKER CORRELATION WITH CONDENSATES. CHEMOSTRAT STUDY OF OBM-CONTAMINATED WELL USING HYDROUS PYROLYSATES - M. Moldowan ^{1*} , J. Dahl ² , A. Suleiman ³ ¹ Biomarker Technologies Inc.; ² Stanford University; ³ Nigerian National Petroleum Corporation
16:00 Coffee Break (Mon PM)			
New Techniques Session Chair: L. Shawar (MIT)		Paleoclimate & Environment 1 Session Chair: S. Coffinet (University of Rennes 1)	
16:30	QUANTIFICATION OF B VITAMINS IN BIOLOGICAL AND ENVIRONMENTAL SAMPLES - S. Bruns ^{1*} , G. Wienhausen ¹ , B. Scholz-Böttcher ¹ , H. Wilkes ¹ ¹ Institute For Chemistry And Biology Of The Marine Environment (icbm)	16:30	SEASONAL HYDROCLIMATE IN THE NORTHERN MEDITERRANEAN BORDERLANDS DURING THE LAST GLACIAL CYCLE - M. Berke ^{1*} , A. Taylor ¹ , A. Koutsodendris ² , J. Pross ² ¹ University of Notre Dame; ² Heidelberg University
16:50	PARTITIONING OF METAL IONS BETWEEN WATER AND PETROLEUM AT GEOLOGICAL TEMPERATURES: AN EXPERIMENTAL STUDY - M. CHBANI ^{1*} , R. MICHELS ¹ , M. BOIRON ¹ , C. LORGEUX ¹ , C. PEIFFERT ¹ , S. LECLERC ¹ , M. LAZERGES ¹ ¹ Université de Lorraine	16:50	Biomarkers in fossil resins as a tool in paleoenvironmental reconstructions - J. Pańczak ^{1*} , P. Kosakowski ¹ , A. Zakrzewski ¹ ¹ University of Science and Technology
17:10	ORGANIC MATTER DYNAMICS IN A HUMAN-IMPACTED ESTUARY: INSIGHTS FROM BIOMARKERS AND EXCITATION-EMISSION MATRIX FLUORESCENCE - Z. Zhang ^{1,2*} , E. Parlanti ² , C. Anquetil ¹ , M. Sourzac ² , Z. Hayet ² , A. Huguet ¹ ¹ Sorbonne Université; ² Université Bordeaux	17:10	THE POTENTIAL OF PEAT DEPOSITS TO RECONSTRUCT PALEOCLIMATE AND -ENVIRONMENT USING LIPID BIOMARKERS IN WESTERN CENTRAL AFRICA - V. Schaaff ^{1*} , V. Grossi ¹ , M. Makou ¹ , S. Ansanay-Alex ¹ , B. Eddhif ¹ , P. Deschamps ² , B. Hamelin ² , Y. Garcin ² , D. Sebag ³ , B. Ngounou Ngatcha ⁴ , G. Ménot ¹ ¹ Université Lyon; ² CEREGE - Aix Marseille Université; ³ IFP Energies Nouvelles; ⁴ LAMISE - University of NGaoundéré

Oral Presentations | Tuesday 12 September

PLENARY

08:35 **Announcements (Tue)**

Plenary 03

Session Chair: E. Minor (University of Minnesota Duluth)

- 08:40 Bacterioplanepolyols as Biomarkers for Aerobic Methanotrophs in a Coastal System** - N. Richter^{1*}, E.C. Hopmans¹, S. Ding¹, L. Villanueva^{1,2}, D. Rush¹
¹NIOZ Royal Netherlands Institute For Sea Research; ²Utrecht University
- 09:05 USING ORGANIC GEOCHEMISTRY TO ASSESS HOLOCENE SEA-ICE VARIABILITY IN NOVEL SNOW PETREL STOMACH OIL DEPOSITS FROM ANTARCTICA** - M. Stevenson^{1*}, D. Hodgson^{1,2}, M. Bentley¹, D. Gröcke¹, E. McClymont¹
¹Durham University; ²British Antarctic Survey
- 09:30 Untargeted Lipidomic Study Reveals Temperature-Dependent Composition of Organic Compounds in the World's Oceans** - W. Liu^{1*}, H. Holm², J. Lipp¹, B. Van Mooy², K. Hinrichs¹
¹University of Bremen; ²Woods Hole Oceanographic Institution (WHOI)
- 09:55 LIPID BIOMARKERS RECORD ENHANCED MARINE METHANE CYCLING AND VENTILATION OF THE DEEP OCEAN IN THE PALEOZOIC** - N. Marshall^{1*}, G. Love¹, M. Rohrsen¹, A. Kuhl², R. Pancost², A. Pohl³, C. Reinhard⁴, A. Ridgwell¹
¹University of California; ²University of Bristol; ³Université Bourgogne Franche-Comté; ⁴Georgia Institute of Technology
- 10:20 **Coffee Break (Tue AM)**

Plenary 04

Session Chair: R. MICHELS (Université de Lorraine, CNRS, GeoResources lab)

- 10:45 HIGH STRUCTURAL DIVERSITY OF SPHINGOLIPIDS PRODUCED BY UNCULTIVATED ANAEROBIC BACTERIA** - S. Ding^{1*}, Von Meijenfeldt FAB¹, Bale NJ¹, Hopmans EC¹, Sahonero-Canavesi DX¹, Suominen S¹, Abdala Asbun A¹, Schouten S^{1,2}, Sinnighe Damsté JS^{1,2}, Villanueva L^{1,2}
¹NIOZ Royal Netherlands Institute for Sea Research; ²Utrecht University
- 11:10 BIOTIC AND PALEOENVIRONMENTAL SIGNATURES IN ORGANONITROGEN, -SULFUR AND -OXYGEN COMPOUNDS OF IMMATURE SEDIMENTARY ROCKS** - H. Yue¹, B. Horsfield^{1,2}, H. Schulz¹, S. Yang³, A. Vieth-Hillebrand¹, S. Poetz^{1*}
¹Helmholtz Centre Potsdam (GFZ German Research Centre for Geosciences); ²GEOS4 GmbH; ³China University of Petroleum (East China)
- 11:35 COUPLED ABIOTIC AND BIOTIC SULFURIZATION OF ALKYL SUBSTRATES AND ASSOCIATED 34/32S FRACTIONATION DURING MICROBIAL SULFATE REDUCTION** - V. Grossi^{1*}, C. Cravo-Laureau², B. Eddhif¹, I. Mitteau², A. Amrani³
¹Laboratoire de Géologie de Lyon (UCBL - CNRS); ²Université de Pau et des Pays de l'Adour - E2S UPPA (CNRS - IPREM); ³The Hebrew University of Jerusalem (Institute of Earth Sciences)
- 12:00 **Lunch Break (Tue)**

Poster session Tuesday

- 13:30 A Chemical Approach for Resolving Mineral Scale-Induced Injectivity Impairment in PWRI Application** - H. M. Kermani^{1*}, M. Bonto¹, H. M. Nick¹
¹Technical University Of Denmark
- LIPIDOMIC CHEMOTAXONOMY ALIGNED WITH PHYLOGENY OF HALOARCHAEA** - W. Yao¹, W. Zhang^{1,2}, W. He¹, W. Xiao^{1,3,4}, Y. Chen¹, Y. Zhu^{1,4}, F. Zheng^{1,5}, C. Zhang^{1,4,5}
¹Southern University Of Science And Technology; ²GEOMAR Helmholtz Centre for Ocean Research Kiel; ³University of Southern Denmark; ⁴Shanghai Sheshan National Geophysical Observatory; ⁵Southern Marine Science and Engineering Guangdong Laboratory (Guangzhou)
- BIOGEOCHEMISTRY OF CARBONATE – ASSOCIATED ORGANIC MATTER: A STORY IN 3 PARTS** - M. Zeller^{1,7*}, B. Van Dam², A. McKenna^{3,4}, C. Lopes⁵, C. Osburn⁶, J. Fourqrean⁵, J. Kominoski⁵, M. Böttcher^{7,8,9}, D. Smrzka¹, N. Smit¹, V. Orphan¹⁰, G. Bohrmann¹, The South Atlantic Transect IODP Expedition 390 & 393 Scientists¹¹, J. Meiland¹, M. Zabel¹, K. Hinrichs¹
¹MARUM - Center For Marine Environmental Sciences; ¹⁰California Institute of Technology; ¹¹Various; ²Helmholtz-Zentrum HEREON; ³National High Magnetic Field Laboratory; ⁴Colorado State University; ⁵Florida International University; ⁶North Carolina State University; ⁷Leibniz Institute for Baltic Sea Research (IOW); ⁸University of Greifswald; ⁹University of Rostock
- CONTROLS ON OH-GDGT CYCLIZATION IN THAUMARCHAEAL CULTURES: IMPLICATIONS FOR OH-GDGT PALEOTHERMOMETRY** - F. Elling^{1*}
¹University of Kiel
- Icelandic Lignites - Contextualizing Deep Time Archives** - M. Allison^{1*}, J. Bendle¹, S. Jones¹, J. Hall¹
¹University Of Birmingham
- RECOGNITION OF PHYSICAL-CHEMICAL PROPERTIES OF ASPHALTITES, NORTHERN VALLE MEDIO DEL MAGDALENA BASIN (VMM), COLOMBIA** - J.F. Sanabria Vargas^{1*}, M.D. Traslaviña Bueno¹, M.A. Leon Caffroni¹, M. Garcia Gonzales², J.S. Gomez Neita¹
¹Federal University of Rio Grande do Sul; ²Industrial University of Santander
- LARGE GEOCHEMICAL DATASET PROCESSING APPLIED TO CENTRAL NORTH SEA (UK) REGIONAL SOURCE ROCK ASSESSMENT AND 1D MODELING** - A. Preiss¹, S. Mehay^{1*}
¹SLB
- KINETIC ANALYSIS OF THE GENERATION OF HYDROCARBONS IN THE BITUMINOUS SHALES FROM THE IRATI FORMATION, PARANÁ BASIN, BRAZIL** - G. Link^{1*}, M. González¹, W. Kalkreuth¹, T. Silva¹
¹Federal University of Rio Grande do Sul
- Evolution and geological significance of biomarkers in coal measures source rocks in thermal simulation experiments** - Y. Yang^{1*}, Z.L. Huang¹
¹China University Of Petroleum
- POLYCYCLIC AROMATIC HYDROCARBONS IN HYPY PYROLYSATES FROM 3.42-BILLION-YEAR-OLD CARBONACEOUS MATTER** - M. Reinhardt^{1*}, V. Thiel¹
¹University of Göttingen

Poster session Tuesday

13:30	<p>Organic geochemical composition characteristics of crude oil in Shunbei oilfield, Tarim Basin - C. Fei¹, D.F. Song¹, T.G. Wang¹, A.L. Liu¹, J.D. Yan¹ ¹China University Of Petroleum</p> <p>The biochemistry of bacterial sterol methyltransferases and their distribution in the environment - M. Brown^{1*}, P. Welander¹ ¹Stanford University</p> <p>PALEOENVIRONMENTAL IMPLICATIONS ON THE DEPOSITION OF ORGANIC MATTER-RICH ROCKS FROM THE BARRA VELHA FORMATION (SANTOS BASIN, BRAZIL) - R. Lenz^{1*}, J. Schmidt¹, A. Maraschin¹, R. Barili¹, F. Dalla Vecchia¹, T. Silva² ¹Institute of Petroleum and Natural Resources - PUCRS; ²Federal University of Rio Grande do Sul</p> <p>Organic geochemistry, source and significance of Cretaceous oil seepage in the Northern Ordos Basin, China - M. Zhang^{1*}, D. Song¹, T. Wang¹ ¹China University of Petroleum (Beijing)</p> <p>Distribution Characteristics and application of compound specific sulfur isotope in crude oils with different origins - S. Li^{1*}, P. Greenwood², A. Amrani³, H. Zhang¹, S. Deng¹, J. Liu¹ ¹China University Of Petroleum; ²University of Western Australia; ³The Hebrew University</p> <p>SOURCES OF OIL AND GAS IN RECENT OFFSHORE SARAWAK WELLS: INSIGHTS FROM OIL MOLECULAR COMPOSITION AND GAS ISOTOPE ANALYSIS - K. Jankaew^{1*}, M. Mesdakom¹, R. Noosri¹ ¹PTTEP</p> <p>PLASTIC-SOIL INTERACTIONS – INSIGHT FROM CASE STUDY ON POLYPROPYLENE SELECTIVE MICROBIAL COLONISATION - K. Jarosz^{1*}, R. Ważny¹, M. Stolorczyk¹, R. Janus², A. Borek-Doroszl¹, M. Michalik¹, P. Rozpądek¹ ¹Jagiellonian University in Krakow; ²AGH University of Krakow</p> <p>GEOCHEMICAL CHARACTERISTICS AND ORANIC FACIES DIVISION OF UPPER PALEOZOIC SOURCE ROCKS IN HUANGHUA DEPRESSION BOHAI BAY BASIN - C. Li^{1*}, J. ZENG¹ ¹China University of Petroleum (Beijing)</p> <p>LIPID BIOMARKERS IN TREE RINGS: CHEMOTAXONOMY, DIAGENESIS AND POTENTIAL FOR PALAEOENVIRONMENTAL RECONSTRUCTIONS - S. Riauxset¹, C. Gauthier¹, M. Pierre¹, J. Jacob^{1*}, V. Daux¹ ¹Cnrs</p> <p>SENSITIVITY TO TEMPERATURE OF FOREST SOIL ORGANIC MATTER COULD BE EXPLAINED BY MOLECULAR DIVERSITY OF SOIL? - C. Bonnefoy-Claudet^{1*}, J. Kaa^{2,3}, M. Thevenot¹, J. Lévêque¹, M. Panettieri³, E. Cognard¹, A. Santoni¹, O. Mathieu¹ ¹Université De Bourgogne; ²Pyrolyscience; ³Instituto de Ciencias Agrarias ICA-CSIC</p> <p>NEW GEOCHEMICAL PROXIES OF NITROGEN- AND OXYGEN-CONTAINING COMPOUNDS CHARACTERIZED BY ESI (-) FT-ICR MS - S. Deng^{1*}, S. Li¹ ¹China University Of Petroleum</p> <p>HYDROCARBON MIGRATION ANALYSIS IN WENSU AREA OF TARIM BASIN: INSPIRATION FROM OIL-SOURCE CORRELATION AND BASIN MODELING - H. Zhang^{1*} ¹China University Of Petroleum</p> <p>DECODING LATE HOLOCENE HUMAN IMPACT ON VEGETATION OF THE TIBETAN PLATEAU THROUGH PEAT ALKANE RECORDS - Y. Feng^{1,2*}, H. Long¹, S. Zhou^{1,2}, C. Zhang¹, A. Huguet³ ¹Nanjing Institute Of Geography And Limnology; ²University of Chinese Academy of Sciences; ³Sorbonne Université</p> <p>Identification and hydrocarbon-generating mechanism of a novel nonhydrolyzable biopolymer in a pure-cultured dinoflagellate - Y. Ran^{1*}, X. Kong¹, Y. Yang¹ ¹Guangzhou Institute Of Geochemistry (Chinese Academy Of Sciences)</p> <p>GEOCHEMICAL TRACER OF HYDROCARBON MIGRATION PATH OF MIDDLE- CENOZOIC IN THE SOUTH SLOPE OF THE KUQA FORELAND BASIN NW CHINA - L. CHUN^{1*} ¹PetroChina Hangzhou Research Institute of Geology</p> <p>GEOCHEMICAL COMPOSITION OF OIL/BITUMEN PRESENT IN FRACTURES OF PERMIAN SEQUENCES OF THE PARANÁ BASIN, SOUTH BRAZIL - M. Bicca^{1*}, T. Silva¹, R. Hinrichs¹, W. Kalkreuth¹, H. Anzolin¹, S. Barrionuevo¹ ¹Ufrgs</p> <p>PALEOENVIRONMENTS AND ORGANIC MATTER ENRICHMENT IN SOUTHERN RUSSIA AND CENTRAL ASIA DURING THE PETM - E. Leushina[*], N. Pedentchouk¹, E. Kozlova, Y. Gavrilov, M. Spasennykh ¹University of East Anglia</p> <p>FIRST TRACES OF THE ANTIQUE SETTLEMENT OF THE CITY OF CADIX (SW SPAIN) USING ORGANIC MOLECULAR MARKERS FROM CORE SAMPLES - P. Schaeffer^{1*}, P. Adam¹, M. Ruspeler¹, F. Salomon¹, D. Bernal-Casasola², J.J. Diaz², M. Lara² ¹Université de Strasbourg-CNRS; ²University of Cadix</p> <p>IN-SITU ACTIVITY OF THE HETEROTROPHIC MICROBIAL COMMUNITY IN SEEP SEDIMENTS FROM THE SANTA MONICA BASIN - J. Bösche^{1*}, R.L. Wipfler², K. Sharma², A.Z. Worden³, K. Hinrichs¹, V.J. Orphan^{1,2} ¹MARUM-Center for Marine Environmental Sciences; ²California Institute of Technology; ³GEOMAR- Helmholtz-Zentrum für Ozeanforschung</p> <p>DIAGENETIC ORIGIN OF SEDIMENTARY POLYCYCLIC AROMATIC HYDROCARBONS USED AS FIRE MARKERS - I. Bobrovskiy^{1*}, J.J. Brocks² ¹GFZ-Potsdam; ²The Australian National University</p> <p>EXPANSION OF CASCADE (CIRCUM-ARCTIC SEDIMENT CARBON DATABASE) WITH MOLECULAR SOURCE MARKERS OF TERRIGENOUS ORGANIC MATTER - N. Budtz^{1,2*}, B. Wild^{1,2}, J. Martens^{1,3}, F. Matsubara^{1,2}, A. Pierkowski^{4,5}, Ö. Gustafsson^{1,2} ¹Stockholm University; ²Bolin Centre for Climate Research; ³Columbia University; ⁴Adam Mickiewicz University; ⁵The University Centre in Svalbard</p>
-------	--

Poster session Tuesday

13:30	<p>DISCERNING DIAGENETIC PATHWAYS FOR DISCRETE STEROL PRECURSORS - K. Doiron¹, S. Brassell^{1*}, P. Bijl², T. Wagner³, J. Herrle⁴, G. Uenzelmann-Neben⁵, S. Bohaty⁶, L. Childress⁷, IODP Expedition 392 Science Party⁸ ¹Indiana University; ²Utrecht University; ³Heriot-Watt University; ⁴Goethe University; ⁵Alfred Wegener Institute; ⁶Heidelberg University; ⁷Texas A&M University; ⁸Various</p> <p>INSIGHTS INTO CARBONACEOUS MATTER IN ~ 3.5 GA HYDROTHERMAL BARITES FROM THE DRESSER FORMATION (PILBARA CRATON, AUSTRALIA) - L. Weimann^{1*}, M. Reinhardt¹, J. Duda¹, H. Mißbach-Karmrodt², H. Drake³, J. Schönig¹, J. Holburg⁴, L.B. Andreas⁵, J. Reitner¹, M.J. Whitehouse⁶, V. Thiel¹ ¹University of Göttingen; ²University of Cologne; ³Linnaeus University; ⁴Institut für Nanophotonik Göttingen e.V.; ⁵Max Planck Institute for Multidisciplinary Sciences; ⁶Swedish Museum of Natural History</p> <p>Stable carbon and nitrogen isotope analysis of urea in aqueous media using ESI–Orbitrap mass spectrometry - C. Hallmann^{1*}, C. Karger¹, M. Julien¹ ¹GFZ – German Research Center For Geosciences</p> <p>OPTIMIZATION OF PYROLYSES CONDITIONS FOR EFFECTIVE ACQUIRING OF LIQUID FRACTION (BIO-OIL) FROM BIOMASS - M. Kania^{1*}, M. Janiga¹, I.M. Matyasyk¹, A. Wcisłak-Oleszycka¹ ¹Oil & Gas Institute-National Research Institute</p> <p>MODELING THE DECOMPOSITION SIGNAL AND CORRECTING BULK ORGANIC DATA FROM A PEAT DEPOSIT: A CASE STUDY AT LOW LATITUDES (CAMEROON) - V. Schaaff^{1*}, D. Sebag², V. Grossi¹, M. Makou¹, S. Ansanay-Alex¹, B. Eddhif¹, P. Deschamps³, B. Hamelin³, Y. Garcin³, B. Ngounou Ngatcha⁴, G. Ménot¹ ¹Université Lyon; ²IFP Energies Nouvelles; ³CEREGE - Aix Marseille Université; ⁴LAMISE - University of NGaoundéré</p> <p>Impact of natural weathering on source rocks: organic and inorganic geochemical evidence - S. Pan¹, Y. Liao^{1*}, F. Wang¹, B. Jiang¹, Z. Wan¹ ¹Guangzhou Institute of Geochemistry (Chinese Academy of Sciences)</p> <p>HYDROCARBON MIGRATION IN THE NORTHERN BARENTS SEA BASIN AS INFERRED FROM GEOCHEMICAL INVESTIGATIONS OF BOTTOM DEPOSITS - L. Sigacheva[*], O. Vidishcheva, A. Kalmykov, E. Poludetkina, G. Akhmanov</p> <p>A NOVEL CHEMOMETRIC APPROACH FOR OIL & SOURCE ROCK CLUSTERING - V.I. Makri^{1,2*}, D. Pasadakis³, N. Pasadakis^{1,2} ¹Institute of GeoEnergy; ²Technical University of Crete; ³Università della Svizzera Italiana</p> <p>Nitrogen cycling during the Mesoproterozoic as informed by the 1400 million year old Xiamaling Formation - X. Wang¹, S. Zhang¹, Y. Ye², S. Ma^{1*}, J. Su¹, H. Wang¹, D. Canfield³ ¹Research Institute of Petroleum Exploration and Development - Petrochina; ²Peking University; ³University of Southern Denmark</p> <p>CO₂ CONCENTRATING MECHANISM MAY CONSTRAIN THE SPICE COUPLED ISOTOPE EXCURSION - H. Wang^{1,2,3}, Q. Deng^{1,2,3}, B. Cheng^{1,2*}, H. Zhang⁴, Z. Liao^{1,2}, P. Peng^{1,2} ¹Guangzhou Institute Of Geochemistry (Chinese Academy Of Sciences); ²CAS Center for Excellence in Deep Earth Science; ³University of Chinese Academy of Sciences; ⁴PetroChina Tarim Oilfield Company</p> <p>CHARACTERIZING THE INTACT POLAR LIPID PROFILE OF THE brGDGT PRODUCER SOLIBACTER USITATUS - T.A. Halamka^{1*}, T. Evans², S. Schubert¹, A. Younkin¹, K. Hinrichs², S. Kopf¹ ¹University Of Colorado Boulder; ²University of Bremen</p> <p>OPTIMIZATION OF THE METHOD FOR ISOLATION AND PURIFICATION OF BENZO[A]PYRENE FROM BIOLOGICAL MATERIAL - I. Kojić^{1*}, M. Stojković¹, S. Đurović¹, A. Grčić¹, L. Iljin¹ ¹University of Belgrade</p> <p>SUBSURFACE INFLUENCE ON STRAY METHANE EMISSIONS, PERMIAN BASIN, NEW MEXICO USA - C. Turich^{1*} ¹Echantillon Advising</p> <p>ORGANIC GEOCHEMISTRY AND GREEN CHEMISTRY: A GOOD SYNERGY - A. Akinlua^{1*} ¹Obafemi Awolowo University</p> <p>EVIDENCE OF FREQUENT WILDFIRES IN THE MIDDLE JURASSIC COAL SEAM IN THE ORDOS BASIN, NORTHERN - C. Zhao^{1*}, K. Zhang², L. Xiao¹, D. Uhl³, Z. Shi⁴, B. Liu¹ ¹Hebei University Of Engineering; ²China University of Geosciences; ³Senckenberg Research Institute and Natural History Museum Frankfurt; ⁴China University of Mining and Technology</p> <p>DEVELOPMENT OF A CHEMOTAXONOMIC CLASSIFICATION OF NEW ZEALAND PLANTS: IMPLICATIONS FOR PALEOENVIRONMENTAL RECONSTRUCTION - A. Gordon¹, S. Naeher^{2*}, A. Rees¹, E. Kennedy², I. Raine² ¹Victoria University of Wellington; ²GNS Science</p>
--------------	--

Oral Presentations | Tuesday 12 September

PASTEUR ROOM		EINSTEIN ROOM	
Insights from GDGTs Session Chair: S. Wakeham (Retired)		New Approaches in Petroleum Geochemistry Session Chair: S. Mehay (Schlumberger)	
15:00	Seasonal variability in GDGT-2/GDGT-3 in marine sediment traps and its implications for TEX86 paleothermometry - A. Rice ^{1*} , R. Paul ¹ , D. Bouwmans ¹ , F. Peterse ¹ , A. Van Boxtel ² , R. Smulders ¹ , G. De Lange ¹ , J. Stuu ² , M. Ziegler ¹ , A. Sluijs ¹ ¹ Utrecht University; ² NIOZ	15:00	HYDROCARBON EVALUATION IN REAL-TIME USING ADVANCED MUDGAS LOGGING: FAST-TRACKING EXPLORATION WORK - M. Lundberg ¹ , D. Finken ¹ , F. Ungar ¹ , D.M. Niemann ^{1*} ¹ Equinor ASA
15:20	IMPACT OF ORGANIC MATTER REWORKING UPON GDGT PROXIES DURING TRANSIENT WARMING EVENTS - G. Inglis ^{1*} , P. Martinez-Sosa ² , J. Tierney ² , C. Witkowski ³ , S. Lyons ⁴ , A. Baczynski ⁴ , K. Freeman ⁴ ¹ University Of Southampton; ² University of Arizona; ³ University of Bristol; ⁴ Pennsylvania State University	15:20	NEW PURGE SYSTEM FOR GAS EQUIPMENT ENHANCES SYSTEM RESPONSE AT LOW CONCENTRATIONS – MOVING TO TRUE QUANTITATIVE DATA - N. Ritzmann ¹ , A. Cartellieri ¹ , S. Erdmann ^{1*} ¹ Baker Hughes
15:40	Moisture availability as main control on brGDGT distributions at the western Chinese Loess Plateau - J. Guo ^{1*} , L. Fuchs ¹ , M. Ziegler ¹ , S. Mishra ¹ , Y. Sun ² , F. Peterse ¹ ¹ Utrecht University; ² Institute of Earth Environment	15:40	IMPACT OF EXPULSION AND PRODUCTION FRACTIONATION ON PETROLEUM COMPOSITION: NOVEL INSIGHTS FROM POLAR COMPOUNDS GEOCHEMISTRY - N. Mahlstedt ^{1*} , B. Horsfield ¹ , E. Michael ² , Y. Song ² , M. Tobey ³ , K. Mangelsdorf ⁴ ¹ Geos4 GmbH; ² ConocoPhillips; ³ Ovintiv; ⁴ GFZ German Research Centre for Geosciences
16:00 Coffee Break (Tue PM)			
Environmental Geochemistry Session Chair: J. Weijers (Shell International Exploration & Production Inc)		Seeps Session Chair: X. Xia (Apache Corporation)	
16:30	INFLUENCE OF PARTICLE POLYMER SIZES AND SHAPES DURING THE THERMAL DEGRADATION OF PLASTICS IN SEDIMENTS - M. Romero-Sarmiento ^{1*} , H. Ravelojaona ¹ , M. Tellez ¹ , S. Rohais ¹ ¹ IFP Energies Nouvelles	16:30	MULTI-ISOTOPE SOURCE FINGERPRINTING FOR METHANE HOTSPOTS IN THE EAST SIBERIAN ARCTIC SHELF REGION - M. Brussee ^{1*} , H. Holmstrand ¹ , B. Wild ¹ , D. Kosmach, D. Chernykh, K. Shcherbakova, N. Shakhova ² , I. Semiletov ² , Ö. Gustafsson ¹ ¹ Stockholm University; ² University of Alaska Fairbanks
16:50	ADDRESSING MICROPLASTIC SIZE DISTRIBUTIONS IN A LARGE LAKE: ADVENTURES IN SAMPLING AND ANALYSIS - E. Minor ^{1*} , M. Maurer-Jones ¹ , K. Schreiner ¹ , J. Fox ¹ , G. Schwoerer ¹ , A. Thomas ¹ , N. Poulton ² , U.D. Gomes ¹ ¹ University of Minnesota Duluth; ² Bigelow Laboratory for Ocean Sciences	16:50	13C-depleted ethane revisited - clues from occurrences in sediments and seep gases worldwide - M. Blumenberg ^{1*} , S. Schlömer ¹ , M. Römer ² , J. Kretzschmar ³ , M. Krüger ¹ ¹ Federal Institute for Geosciences & Natural Resources (BGR); ² MARUM – Center for Marine Environmental Sciences; ³ DBFZ Deutsches Biomasseforschungszentrum gemeinnützige GmbH (German Biomass Research Centre)
17:10	SIGNATURE METABOLITES OF HYDROCARBON BIODEGRADATION AT A HISTORIC OIL PRODUCTION SITE - C. Baensch ^{1*} , H. Wilkes ¹ ¹ University Of Oldenburg	17:10	METHANE FORMATION AND ITS ISOTOPIC ALTERATION AT TWO ACTIVE DEEP OCEAN COLD SEEPS FROM THE SCOTIAN SLOPE OF ATLANTIC CANADA - A. Chowdhury ^{1*} , E. Lalk ² , S. Ono ² , J.M. Dooma ¹ , N. Morrison ³ , J. Bentley ¹ , M.J. Kerr ¹ , A. MacDonald ³ , M. Fowler ⁴ , A. MacRae ¹ , R. Bennett ⁵ , C. Hubert ⁶ , T. Ventura ¹ ¹ Saint Mary's University; ² Massachusetts Institute of Technology; ³ Nova Scotia Department of Natural Resources and Renewables; ⁴ Applied Petroleum Technology; ⁵ Natural Resources Canada; ⁶ University of Calgary
		17:30	TENTATIVE PREDICTION OF THE RECALCITRANT ORGANIC CARBON INDICATOR FOR EXOGENOUS ORGANIC MATTER USING ROCK-EVAL ANALYSIS - I. Kowalewski ^{1*} , V. Ducasse ² , F. Watteau ⁴ , H. Ravelojaona ¹ , Y. Capowiez ² , J. Peigne ³ ¹ IFP Energies Nouvelles; ² Avignon University; ³ Lyon University; ⁴ Nancy Université

PLENARY

08:35 Announcements (Wed)

Plenary 05

Session Chair: H. Wilkes (University of Oldenburg)

08:40 CRETACEOUS AND PALEOCENE SEDIMENTS FROM THE TRANSKEI BASIN (IODP SITE U1581) RECORD EVOLUTIONARY DEVELOPMENTS IN ALKENONES - K. Doiron^{1*}, S. Brassell¹
¹Indiana University

09:05 DOES TERRESTRIAL ORGANIC MATTER BECOME MORE MARINE-LIKE UPON OXIDATIVE DEGRADATION? - S. Sullivan¹, L. Bondurant¹, J.V. Dos Santos¹, A. Goranov¹, H. Hamontree¹, P. Hatcher^{1*}
¹Old Dominion University

09:30 IMPACT OF SUPERCRITICAL CO₂ ON THE CHEMICAL COMPOSITION OF CRUDE OILS FROM PRE-SALT RESERVOIRS OF THE SANTOS BASIN, BRAZIL - T. Oldenburg^{1*}, H. Hosseini¹, J. Pimentel Lopes², Y. Dos Santos Rocha², I. Viegas Alves Fernandes de Souza²
¹University of Calgary; ²Petrobras

09:55 EVIDENCE FOR AUTOTROPHIC METABOLISM OF CA. BATHYARCHAEOTA IN WETLANDS BASED ON COMPOUND SPECIFIC CARBON ISOTOPE ANALYSIS - S. Coffinet^{1*}, A. Dufresne¹, A. Quaiser¹, K. Hinrichs², A. Laverman¹
¹University of Rennes; ²University of Bremen

10:20 Coffee Break (Wed AM)

Plenary 06

Session Chair: S. Erdmann (Baker Hughes)

10:45 EXTREME CHANGES IN δ²H OF ALKENONES DURING THE OLIGOCENE AND EARLY MIOCENE IN THE EASTERN EQUATORIAL ATLANTIC OCEAN - K. Haettig^{1*}, D. Jenny², E. Wubben², F. Peterse², A. Sluijs², M. Van der Meer¹, S. Schouten^{1,2}
¹NIOZ; ²Utrecht University

11:10 ORGANIC GEOCHEMISTRY IN THE ENERGY TRANSITION: APPLICATIONS IN INDUSTRY - J. Weijers^{1*}, G. Spaak², R. Van der Ploeg², J. Pureveen², K. Van Zuilen², T. Evans², S. Van den Boorn², J. Van Winden², G. Siavalas², T. Tambach², O. Podlaha², L. Rock³, M. Fay³, J. Hinojosa¹, C. Dealing¹, P. Van Bergen⁴
¹Shell USA; ²Shell Netherlands; ³Shell Canada; ⁴Shell United Kingdom

11:35 EAOG GENERAL ASSEMBLY

12:00 Lunch Break (Wed)

Poster session Wednesday

13:15 LATE CRETACEOUS ARCTIC WILDFIRES AND ECOSYSTEM DYNAMICS RECONSTRUCTED FROM BIOMARKERS IN NEARSHORE MARINE SEDIMENTS - J. Diaz-Tarmayo^{1,2*}, L. Schwark², J. Galloway^{2,3}, M. Bringué³
¹Christian Albrechts University of Kiel; ²University of Calgary; ³Geological Survey

DISTRIBUTION OF 17α(H)-C₃₀ DIAHOPANE AND APPLICATIONS IN OIL-SOURCE CORRELATION OF CHANG-9 RESERVOIRS IN LONGDONG AREA, ORDOS BASIN, CHINA - S. Shi¹, X. Ke¹, Y. Qi², X. Hui², Y. Wang^{1*}
¹Guangzhou Institute of Geochemistry (Chinese Academy of Sciences); ²Research Institute of Petroleum Exploration and Development (PetroChina Changqing Oilfield Company)

14C DATING OF MOLECULAR BIOMARKERS. RECENT DEVELOPMENTS AT LSCE AND APPLICATION TO ARCHAEOLOGICAL BUTTERS - J. Jacob^{1*}, J. Ghalem¹, F. Thils¹, B. Phouybanhdyt¹, C. Gauthier¹
¹Université Paris-Saclay

MOLECULAR CHARACTERISATION OF ARCHAEOLOGICAL AMBERS: GEOGRAPHICAL ORIGINS AND IDENTIFICATION OF POTENTIAL RESTORATION - A. Fradet^{1*}, P. Adam¹, P. Schaeffer¹, E. Boes², M. Michler², E. Demongin³, D. Mathiot³, C. Heninger⁴, A. Specklin⁴, A. Tsuvaltsidis⁵
¹University of Strasbourg-CNRS; ²INRAP Strasbourg; ³Historical Museum of Haguenau; ⁴Unterlinden Museum; ⁵Sorbonne University

FORENSIC INVESTIGATION OF AN OIL SPILL USING DIAGNOSTIC GEOCHEMISTRY DATA AND CHEMOMETRICS - M. Al-Hajeri¹, N. Marcano Balliache^{2*}, H. Saeed², R. Pereira Cardoso²
¹Kuwait Oil Company; ²SLB

EFFECT OF TEMPERATURE AND PH ON THE MEMBRANE LIPID COMPOSITION OF SOIL GRAM-NEGATIVE BACTERIA ISOLATES - E. Hellequin¹, S. Collin¹, M. Seder-Colomina¹, P. Véquaud¹, A. Kish², A. Huguet^{1*}
¹UMR METIS, Sorbonne Université/CNRS/EPHE; ²UMR MCAM, MNHN/CNRS

MICROBIAL METABOLISM OF SHALLOW COLD SEEP SEDIMENTS FROM THE SCOTIAN SLOPE, NOVA SCOTIA - U. Umoh^{1*}, N. Ahangarian¹, G. Oueslati¹, A. Chowdhury¹, E. Redshaw¹, N. Morrison², A. MacDonald², K. Hinrichs³, T. Ventura¹
¹Saint Mary's University; ²Nova Scotia Department of Natural Resources and Renewables; ³University of Bremen

TOWARDS A BETTER UNDERSTANDING OF LAKE ECOSYSTEM RESPONSE TO NATURAL CLIMATE VARIABILITY – A STUDY OF LAKE BRIGHT (NEW ZEALAND) - J. Eschenroeder¹, C. Moy¹, S. Naeher^{2*}, M. Vandergoes², J. Howarth³, C. Riesselman¹, C. Shepherd²
¹University of Otago; ²GNS Science; ³Victoria University of Wellington

TIME-LAPSE GEOCHEMISTRY OF PRE-SALT OILS USING LIGHT HYDROCARBONS BY COMPREHENSIVE TWO-DIMENSIONAL GAS CHROMATOGRAPHY - C. Torres^{1*}, D. Coutinho¹, V. Pereira¹, R. Silva¹, M. Santos¹, L.A. Trindade¹, D. Dubois², F. Aquino Neto¹, D. Azevedo¹
¹Federal University Of Rio De Janeiro; ²Petrobras Research and Development Center

COMPARATIVE PETROGRAPHICAL AND ORGANIC GEOCHEMICAL STUDY OF EOCENE AND OLIGOCENE COAL BASINS FROM SW BULGARIA - A. Zdravkov¹, D. Gross², K. Stojanovic^{3*}, A. Bechtel², I. Kojic³
¹University of Mining and Geology St. Ivan Rilski; ²Montanuniversität Leoben; ³University of Belgrade

Poster session Wednesday

13:15	Modern calibration applied to paleoenvironment: A case study from the Cenomanian of the Bohemian Cretaceous Basin, Czechia - P. Zahajská ^{1,2*} , J. Čepičková ² , J. Trubač ² , N. Pedentchouk ³ , J. Kvaček ⁴ ¹ University of Bern (Institute of Geography and Oeschger Center for Climate Change Research); ² Charles University (Institute of Geology and Palaeontology); ³ University of East Anglia (School of Environmental Sciences); ⁴ National Museum
	HUQF PETROLEUM SYSTEMS IN OMAN BASINS - M. Al Ghamhari ^{1*} , P. Taylor ² , K. Al-Hadhrami ¹ , Z. Al Aisri ¹ , S. Scholten ³ ¹ Petroleum Development Oman; ² Merlin Energy Resources Limited; ³ Shell International
	ORGANIC GEOCHEMICAL INSIGHTS INTO THE EARLY PALAEOGENE VEGETATION FROM THE TROPICS - T. Priya ^{1*} , S. Dutta ¹ , V. Prasad ² ¹ IIT BOMBAY; ² Birbal Sahni Institute of Palaeobotany
	Isotope discrimination during photosynthesis remained constant across the Phanerozoic - C. Witkowski ^{1*} , M.J. Roche ¹ , D. Naafs ¹ , R.D. Pancost ¹ ¹ University of Bristol
	BIOFOSSILS VERSUS MICROFOSSILS – COMPLEMENTS OR CONTRADICTIONS - W. Ruebsam ^{1*} , L. Schwark ¹ ¹ University Of Kiel
	COMPREHENSIVE STUDY OF LIPTINITE-RICH COAL FROM THE PLIOCENE JINSUO BASIN AND THE EOCENE SHENBEI BASIN (CHINA) - B. Liu ^{1*} , A. Bechtel ² , C. Zhao ¹ , K. Stojanovic ³ , Z. Tian ¹ ¹ Hebei University of Engineering (School of Earth Science and Engineering); ² Montanuniversität Leoben; ³ University of Belgrade
	ETHANE WITH 13C CRACKS FASTER ON KEROGEN: INVERSE ISOTOPIC EFFECT CAUSED BY TRANSLATIONAL AND ROTATIONAL ENTROPY LOSSES - X. Xia ¹ , Y. Gao ¹ ¹ The University of Texas at San Antonio
	MOLECULAR MARKERS OF RED BONE MARROW AND MARROW ADIPOSE TISSUE AND THEIR APPLICATION IN GEOLOGICAL SAMPLES - L. Brosnan ^{1*} , A. Elson ¹ , S. Bijl ² , S. Poropat ^{1,3} , S. Sanchez ^{2,4} , A. Manprasertsak ⁵ , E. Hammarlund ⁵ , L. Schwark ^{1,6} , W. Rickard ¹ , K. Grice ¹ ¹ Curtin University; ² Uppsala University; ³ Australian Age of Dinosaurs Museum of Natural History; ⁴ European Synchrotron Radiation Facility; ⁵ Lund University; ⁶ Christian-Albrechts-University of Kiel
	Underestimated ecological contribution of Mesoproterozoic eukaryotes - S. Zhang ¹ , S. Ma ^{1*} , J. Su ¹ , H. Wang ¹ , X. Wang ¹ ¹ Research Institute of Petroleum Exploration and Development - Petrochina
	Effect of heating rate, carrier/reactant gas type and pressure on hydrocarbon generation of geomacromolecules - F. Wang ¹ , Y. Liao ^{1*} ¹ Guangzhou Institute of Geochemistry (Chinese Academy of Sciences)
	APPLICATION OF TRES FLUORESCENCE LIFETIME TO CLASSIFY CRUDE OIL TYPE IN THE MULTI-SOURCE PETROLEUM SYSTEM OF THE THETRIM BASIN - P. Cheng ^{1*} , H. Tian ¹ , H. Gai ¹ , Q. Zhou ¹ , T. Li ¹ , X. Xiao ² ¹ Guangzhou Institute Of Geochemistry (Chinese Academy Of Sciences); ² China University of Geosciences (Beijing)
	Disentangling the influence of climate and lake-basin evolution on GDGT-based proxies: the 250-ka Lake Chala record - A. Baxter ^{1*} , F. Peterse ¹ , D. Verschuren ² , J. Sinninghe Damsté ³ ¹ Utrecht University; ² Ghent University; ³ NIOZ Royal Netherlands Institute for Sea Research
	Controls on the spatial distribution and temporal variation of organic tracers in the sediments of the Paris sewerage system. - A. Camille ^{1*} , J. Jérémy ¹ , M. Régis ² , A. Sophie ¹ , R. Stéphane ³ ¹ Université Paris-Saclay; ² Université Paris Est Creteil; ³ Université Paris Nanterre
	Temperature controls on dynamics and evolution of archaeal lipid distribution - S. Zhao ¹ , L. Zhou ¹ , X. Sun ¹ , Z. Gao ¹ , Y. Zhou ² , N. Wang ¹ , Y. Wang ¹ , J. Chen ³ , L. Xing ¹ , R. Bao ^{1*} ¹ Ocean University Of China; ² Guangzhou Marine Geological Survey; ³ Ministry of Natural Resources
	EFFECTS OF INORGANIC MINERALS AND KEROGEN IN SHALE TO ADSORB CRUDE OIL - Y. Zhang ^{1*} ¹ China University of Geosciences (Wuhan)
	Hopanoids in a Toarcian black shale: Compositional changes and environmental drivers - T. Marten ^{1*} , J. Mutterlose ² , W. Ruebsam ¹ , L. Schwark ¹ ¹ Kiel University; ² Bochum University
	THE IMPORTANCE OF ACETATE REGARDING THE PRODUCTION OF METHYLATED BRGDGTS IN ACIDOBACTERIA SOLIBACTER USITATUS - V. Schneider ^{1*} , A.J. Winter ¹ , M.P. Crump ¹ , B.D.A. Naafs ¹ ¹ Bristol University
	INCREASED DECOMPOSITION OF ROOT-DERIVED BIOMASS BY WARMING IN A TEMPERATE FOREST SOIL IS DEPTH DEPENDENT - B. Sun ^{1*} , C. Zosso ² , M. Torn ³ , G. Wiesenberger ¹ , M. Schmidt ¹ ¹ University Of Zurich; ² Agroscope; ³ Lawrence Berkeley National Laboratory
	THERMAL HISTORY DISTORTION IN CARBONACEOUS MUDSTONES ASSIGNED BY LONG SYMMETRIC/ASYMMETRIC MID-CHAIN KETONES - M. Stefanova ^{1*} , Z. Milakovska ² ¹ Institute of Organic Chemistry with Center of Phytochemistry At Bulgarian Academy Of Sciences; ² Geological Institute at the Bulgarian Academy of Sciences
	PETROLEUM SYSTEM STRATEGY APPLIED TO GEOTHERMAL FIELDS: THE CASE OF THE PECHELBRONN SUB-BASIN (FRANCE) - L. TCHANG-TCHONG ^{1*} , R. MICHELS ¹ , L. BECCALETTO ² , C. BOSSENNEC ³ , C. LORGEUX ¹ , A. ELIAS-BAHNAN ¹ , J. PIRONON ¹ , P. FAURE-CATTELOIN ¹ ¹ Université de Lorraine; ² BRGM; ³ Technical University of Darmstadt
	n-alkyl and phytanyl toluenes as markers for maturity and source of petroleum in the Lower Saxony Basin (N Germany) - G. Scheeder ¹ , C. Ostertag-Henning ¹ , M. Blumenberg ^{1*} ¹ Federal Institute for Geosciences & Natural Resources (BGR)
	DISTRIBUTION OF NUCLEOSIDE BACTERIOPANEPOLYOLS ALONG THREE LAND TO SEA TRANSECTS: IMPLICATIONS FOR THEIR PROXY POTENTIAL - I. Hölscher ^{1*} , Z.R. Van Kemenade ¹ , Y. Xu ² , E.C. Hopmans ¹ , S. Schouten ^{1,3} , D. Rush ¹ ¹ NIOZ (Royal Netherlands Institute for Sea Research); ² Shanghai Ocean University; ³ Utrecht University

Poster session Wednesday

13:15	<p>GEOCHEMICAL EXPERIMENT TO ASSESS DRILLING FLUID DRAWBACKS: SOLUTIONS AND AI APPLICATIONS - K. Alelg^{1*}, B. Ghassal¹, Z. Hilal¹ ¹Saudi Aramco</p>
	<p>SOIL GAS MONITORING EXPERIENCE FROM ABOVE UNDERGROUND GAS STORAGE AND A PILOT CO2 STORAGE, CZECHIA - J. Francu¹, P. Jirman^{1*}, V. Hladik¹ ¹Czech Geological Survey</p>
	<p>Effects of clay minerals on the hydrocarbon generation of shale: A case study of Gulong shale in Songliao Basin - X. Wang^{1,2*}, Z. Feng^{1,2}, H. Zeng^{1,2}, G. Jiang^{1,2}, Y. Wang³ ¹PetroChina Daqing Oilfield Co Ltd (Exploration and Development Research Institute); ²Heilongjiang Provincial Key Laboratory of Continental Shale oil; ³PetroChina Daqing Oilfield Co Ltd (The Seventh Oil Production Plant)</p>
	<p>ARCHAEOLOGICAL COMMUNITY COMPOSITION IN HOLOCENE METHANE POCKMARKS IN THE GULF OF GDA SK BASED ON TETRAETHER LIPIDS AND 16S rRNA - I. Śnieżyńska^{1*} ¹University Of Warsaw</p>
	<p>RESOLVING FILLING PATTERNS AND IMPLICATIONS IN COMPLEX HYDROCARBON RESERVOIRS - K. Arouri^{1*}, C. Herrera² ¹Saudi Aramco (EXPEC Advanced Research Center); ²Saudi Aramco (Reservoir Management Department)</p>
	<p>STERIOD BIOMARKERS FROM EPHEMERAL MICROBIAL OASES ON AN ANTARCTIC ICE SHELF - F. Husain^{1*}, J. Millar², A. Jungblut³, T. Evans¹, I. Hawes⁴, R. Summons¹ ¹Massachusetts Institute of Technology; ²Cardiff University; ³Natural History Museum; ⁴University of Waikato</p>
	<p>TRACING AIRBORNE BLACK CARBON INPUTS TO THE EQUATORIAL ATLANTIC OCEAN - O. Teruel^{1*}, N. Penalva¹, N. Davtian¹, P. Comes¹, A. Rosell-Melé², J. Villanueva¹ ¹Autonomous University of Barcelona; ²Institució Catalana de Recerca i Estudis Avançats (ICREA)</p>
	<p>THE MOLECULAR RECORD OF CPE EVENT IN YANCHANG FORMATION, ORDOS BASIN - P. Su^{1*} ¹China University of Geosciences WuHan</p>
	<p>MOLECULAR BIOMARKER AS A MEASURE TO PROBE EUTROPHICATION EFFECTS ON ORGANIC CARBON BURIAL IN LAKES - Y. Sun^{1*}, Y. Xu¹ ¹Zhejiang University</p>
	<p>TRANSIENT HYDROCLIMATIC PERTURBATION IN RESPONSE TO A MIDDLE EOCENE HYPERTHERMAL EVENT RECORDED IN CENTRAL EUROPE - C. Schmitt^{1,2*}, I. Vasiliev¹, N. Meijer¹, A. Martinez-Garcia³, A. Mulch^{1,2} ¹Senckenberg Biodiversity and Climate Research Centre Frankfurt; ²Goethe University Frankfurt; ³Max-Planck-Institute for Chemistry</p>
	<p>MAPPING BLACK CARBON SOURCES IN SURFACE SEDIMENTS FROM THE TROPICAL ATLANTIC OCEAN - N. Penalva-Arias^{1*}, N. Davtian¹, O. Teruel¹, P. Comes¹, M. Raja², A. Rosell-Melé^{1,3}, J. Villanueva¹ ¹ICTA - Autonomous University of Barcelona; ²BPU - School of Chemistry (University of Nottingham); ³Institució Catalana de Recerca i Estudis Avançats</p>
	<p>INITIAL CALIBRATION OF 3-HYDROXY FATTY ACIDS PALEOCLIMATE PROXIES FOR EUROPEAN LAKES AND SOILS - C. Hou^{1*}, G. Duffy¹, A. Yamoah², D. Sasche³, P. Chaiseanwang¹, C. Wang⁴, Y. Yang⁴, E. Norris¹, J. Bendle¹ ¹University of Birmingham; ²University of York; ³German Research Centre for Geosciences GFZ; ⁴China University of Geosciences</p>
	<p>DETECTION AND GEOLOGICAL SIGNIFICANCE OF SESQUITERPENOID FROM CARNIAN HUANGSHANJIE FORMATION OF KUQA DEPRESSION IN TARIM BASIN, CHINA - Y. Zhang^{1,2,3}, H. Zhang⁴, Q. Deng^{1,2}, B. Cheng^{1,2*}, Z. Liao^{1,2} ¹Guangzhou Institute Of Geochemistry (Chinese Academy Of Sciences); ²CAS Center for Excellence in Deep Earth Science; ³University of Chinese Academy of Sciences; ⁴PetroChina Tarim Oilfield Company</p>
	<p>EARLY JURASSIC PCO2 RECONSTRUCTIONS REVEAL DOUBLING OF CARBON DIOXIDE LEVELS ACROSS THE SINEMURIAN–PLIENSCHACHIAN TRANSITION - M. Storm^{1,2*}, S.P. Hesselbo³, S. Schouten^{1,4}, M.T.J. Van der Meer¹ ¹Royal Netherlands Institute for Sea Research; ²Netherlands Earth System Science Centre (NESSC); ³Exeter University; ⁴Utrecht University</p>
	<p>A MULTIPROXY RECORD FROM SUMATRA INDICATES CONTINUOUS HOLOCENE WARMING BUT A MID-HOLOCENE RAINFALL MAXIMUM - P. Hällberg^{1*}, G. Jarne Bueno¹, Y. Schankat¹, A. Hapsari², Q. Zhang¹, H. Rifai³, C. Bouvet De la Maisonneuve⁴, F. Schenk¹, R. Smittenberg¹ ¹Stockholm University; ²University of Goettingen; ³Universitas Negeri Padang; ⁴Nanyang Technological University</p>

Oral Presentations | Wednesday 13 September

PASTEUR ROOM		EINSTEIN ROOM	
Climate Proxy Development Session Chair: R. Smittenberg (Stockholm University)		Reservoir Geochemistry Applications Session Chair: M. Romero-Sarmiento (IFP Energies Nouvelles)	
14:45	EXPLORING THE POTENTIAL OF HYDROXYLATED GDGTS AS PALEOTEMPERATURE PROXIES - D. Varma ^{1*} , L. Villanueva ^{1,2} , P. Offre ^{1,2} , G. Reichart ^{1,2} , S. Schouten ^{1,2} ¹ Royal Netherlands Institute For Sea Research; ² Utrecht University	14:45	ASSESSMENT OF CRUDE OIL POLAR COMPONENTS ONTO CARBONATE AFTER WATERFLOODING AND MODIFIED CATIONIC STARCH INJECTION (EOR) - L. Gicovate ^{1*} , L. Araújo ¹ , G. Da Cruz ¹ , D. Franco ² , B. Vaz ² ¹ Universidade Estadual Do Norte Fluminense; ² Universidade Federal de Goiás
15:05	A NOVEL 3-HYDROXY FATTY ACID-BASED PALAEOETHERMOMETER DEVELOPED FROM SOUTHWESTERN US LACUSTRINE ENVIRONMENTS - A. Hardman ^{1*} , A. Thorpe ^{1,2} , K. Yamoah ³ , C. Wang ⁴ , Y. Yang ⁴ , D. Read ² , J. Bendle ¹ ¹ University Of Birmingham; ² UK Centre for Ecology and Hydrology; ³ University of York; ⁴ China University of Geosciences	15:05	SEAL EFFICIENCY EVALUATION IN THE ZAR-3 PILOT CCS USING BIOMARKERS, MUDLOGS AND ISOTOPES IN THE RESERVOIR AND CAPROCKS, SE CZECHIA - J. Francu ^{1*} , D. Ocásková ¹ , M. Pereszlényi ¹ , P. Pařízek ¹ , P. Jirman ¹ , V. Hladík ¹ ¹ Czech Geological Survey
15:25	NOVEL BIOMARKER-BASED INSIGHTS INTO THE OPERATION OF THE TERRESTRIAL METHANE CYCLE ACROSS THE CENOZOIC (AND BEYOND) - D. Naafs ^{1*} , V. Lauretano ¹ ¹ University Of Bristol	15:25	Molecular transformation of polar organic compounds in crude oil during superimposed secondary alteration - B. Jiang ^{1*} ¹ Guangzhou Institute of Geochemistry (Chinese Academy of Sciences)
15:45 Coffee Break (Wed PM)			
Novel Applications Session Chair: D. Strajpoč (SLB)		Soils and Peats Session Chair: N. Richter (NIOZ Royal Netherlands Institute For Sea Research)	
16:10	DEVELOPMENT OF NEW PROXIES FOR SULFURIZATION AND PALEO-ENVIRONMENTAL CONDITIONS USING A ROCK-EVAL 7S COUPLED TO MC-ICPMS - H. Cohen-Sadon ^{1*} , Y.O. Rosenberg ² , S. Feinstein ³ , A. Amrani ¹ ¹ The Hebrew University Of Jerusalem; ² The Geological survey of Israel; ³ Ben Gurion University of the Negev	16:10	TROPICAL PEATLAND BIOGEOCHEMISTRY ALONG AN ECOLOGICAL TRANSECT: THE ENIGMATIC FATE OF ORGANIC MATTER - M. Vreeken ^{1*} , J. Blewett ² , N.T. Smit ³ , F. Schubotz ³ , A. Gallego-Sala ⁴ , D. Naafs ¹ , R. Pancost ¹ ¹ University of Bristol; ² Harvard University; ³ University of Bremen; ⁴ University of Exeter
16:30	Hydrothermal carbonization of biomass wastes: Sustainability and geochemistry - M. Krugel ^{1*} , T.A. Centeno ² , A. Amado-Fierro ² , J.M. González-LaFuente ³ , R. Forján ⁴ , J.R. Gallego ⁴ ¹ Montclair State University; ² INCAR-CSIC; ³ COGERSA SAU; ⁴ University of Oviedo	16:30	THE INTERPLAY OF SOIL CHEMISTRY AND TEMPERATURE ON BRANCHED AND ISOPRENOID GDGT LIPIDS, USING GLOBAL ELEVATION GRADIENTS - C. De Jonge ^{1*} , J. Guo ² , P. Hallberg ³ , M. Griepentrog ¹ , R. Smittenberg ³ , F. Peterse ² , P. Boeckx ⁴ , G. Dercon ⁵ ¹ ETH Zurich; ² Utrecht University; ³ Stockholm University; ⁴ Ghent University; ⁵ International Atomic Energy Agency



Oral Presentations | Thursday 14 September

PLENARY

09:25 **Announcements (Wed)**

Plenary 07

Session Chair: C. Turich (Echantillon Advising)

09:30 **THE TROPICAL PEATLAND ARCHAEL LIPIDOME – INFLUENCE OF VEGETATION AND REDOX ON DIVERSITY** - R. Pancost^{1*}, J. Blewett^{1,2}, D. Naafs¹, M. Vreeken¹, A. Gallego-Sala³, A. Pearson², F. Schubotz⁴
¹University of Bristol; ²Harvard University; ³University of Exeter; ⁴University of Bremen

09:55 **THE TEMPORAL DISTRIBUTIONS OF SEED-PLANT TERPANES IN SEDIMENTS: APPLICATION AS AGE-DIAGNOSTIC BIOMARKERS IN OILS** - C. Zhu^{1*}, C. Walters², A. Zumberge³
¹Exxonmobil Technology and Engineering Company; ²University of Texas at Austin; ³GeoMark Research Ltd

10:20 **Coffee Break (Thu AM)**

Plenary 08

Session Chair: F. Gelin (TotalEnergies)

10:45 **The Rise of Eukaryotes Recorded by Tonian Lipid Biomarker Patterns and Biomarker Stratigraphy** - A. Rizzo^{1*}, A. Bekker¹, V. Ershova, G. Love¹
¹University Of California

11:10 **LONG-TERM WARMING EXPERIMENTS AS IMPORTANT TOOL TO IMPROVE PALEOENVIRONMENTAL RECONSTRUCTIONS** - G. Wiesenberg^{1*}, T. Speckert¹, D. Püntener¹, N. Ofiti¹, B. Sun¹, C. Zosso¹, E. Pegoraro², J. Soong³, P. Hanson⁴, M. Torn², M. Schmidt¹
¹University of Zurich; ²Lawrence Berkeley Laboratory; ³Colorado State University; ⁴Oak Ridge National Laboratory

11:35 **C31 STEROLS FROM SPONGES AND THEIR NEOPROTEROZOIC FOSSIL COUNTERPARTS** - L. Shawar^{1*}, G. Love², A. Zumberge³, P. Cárdenas⁴, J. Giner⁵, R. Summons¹
¹Massachusetts Institute of Technology; ²University of California; ³GeoMark Research; ⁴Uppsala University; ⁵State University of New York

12:00 **Lunch Break (Thu)**

Poster session Thursday

13:30 **If speed is of the essence: rapid analysis of jetsam ambergris by APCI compact mass spectrometry** - S. Rowland^{1*}, P. Sutton¹, M. Wilde¹
¹University Of Plymouth

REDUCTION, IMMOBILIZATION AND DEGs CONTRIBUTION BY PSEUDOMONAS TO ELUCIDATE THE MECHANISMS OF CHLOROPHENOL-Cr(VI) BIOREMEDIATION - S. Sun^{1,2*}, Y. Wang^{1,2}, S. Chen³, Z. Li⁴, Q. Liu^{1,2}, C. Zhao^{1,2}, X. Zhang^{1,2}
¹China University of Petroleum (east China); ²State Key Laboratory of Petroleum Pollution Control; ³Shandong University of Science and Technology; ⁴Toroivd Technology Company Limited

IDENTIFICATION OF ESTER-LINKED MEMBRANE-SPANNING LIPIDS THROUGH TES HOMOLOG IN AN ACIDOBACTERIUM - Y. Chen^{1*}, F. Zheng¹, H. Yang², D. Naafs³, C. Zhang¹, R. Pancost³, Z. Zeng¹
¹Southern University Of Science And Technology; ²China University of Geosciences; ³University of Bristol

Identification, Evolution and Geological Indications of solid bitumen in shale- A case study of the Qingshankou Formation in Songliao Basin - L. Wang^{2*}, B. Liu², L. Bai², M. Ostadhassan¹
¹Christian-Albrechts-Universität; ²Northeast Petroleum University

PALEO-ENVIRONMENTAL CHARACTERISTICS AND ORGANIC MATTER ENRICHMENT MECHANISM OF THE EOCENE IN THE EAST CHINA SEA BASIN - T. Qu^{1*}, Z. Huang¹
¹China University Of Petroleum Beijing

NITROGEN CYCLE PERTURBATION DURING THE PALEOCENE-EOCENE THERMAL MAXIMUM - X. Zhao^{1*}
¹Kiel University

EXTRACTING CRITICAL RESERVOIR-MANAGEMENT INFORMATION FROM OBM-CONTAMINATED GAS CONDENSATE AND VOLATILE OIL SAMPLES - A. Cerioli Regondi¹, N. Marcano Balliache^{2*}, H. Saeed², M. Monzo¹, L. Stancampiano¹, R. Pereira Cardoso², N. Ali²
¹ENI SPA; ²SLB

HYDROGEN SULFIDE GENERATED DURING OIL THERMAL RECOVERY IN THE BAMIANHE OILFIELD, BOHAI BAY BASIN: IMPLICATIONS FROM VOLATILE ORGANIC SULFUR COMPOUNDS - Q. Xiao^{1*}, S. Cai¹
¹Yangtze University

Decoupling the natural and anthropogenic sources of Pyrogenic Carbon (PyC) in the Himalayan ecotone- an assessment based on molecular signatures. - Y. Ankit^{1*}, E. Dietze¹
¹Landscape Geoscience, Physical Geography, University of Goettingen

PALAEOENVIRONMENT OF THE MIDDLE-LOWER JURASSIC IN TAIPEI SAG: INSIGHTS FOR THE DEVELOPMENT OF HIGH-QUALITY SOURCE ROCKS - B. Wang^{1,2*}, Z. Huang^{1,2}
¹State Key Laboratory of Petroleum Resource and Prospecting; ²China University Of Petroleum Beijing

GEOCHEMICAL CONSTRAINTS ON CRUDE OIL CHARACTERISTICS OF THE MAHU SAG: INSIGHTS FROM THERMAL SIMULATION EXPERIMENTS OF SOURCE ROCK - W. Dang^{1,2*}, G. Gao^{1,2}, Y. Zhang^{1,2}, X. You³, L. Guo^{1,2}, Q. Yan³, W. He³
¹State Key Laboratory of Petroleum Resource and Prospecting; ²China University of Petroleum; ³Exploration & Development Institute - Xinjiang Oil Field Company

MEMBRANE LIPID ADAPTATION IN SOIL THAUMARCHAEOTA - C.D. Rosendahl^{1*}, L.H. Bachmann¹, F. Elling¹
¹Christian-Albrechts-Universität zu Kiel

SEDIMENTARY ENVIRONMENT CHANGES AND DIFFERENTIAL ENRICHMENT OF ORGANIC MATTER UNDER VOLCANIC ACTION IN PERMIAN LUCAOGOU FORMATION, SANTANGHU BASIN, NW CHINA - M. Yu^{1,2*}, G. Gao^{1,2}, J. Kang³, H. Liang³, Q. Ma³, M. Liu^{1,2}
¹China University Of Petroleum Beijing; ²Key Laboratory of Petroleum Resources and Prospecting; ³PetroChina Tuha Oilfield Company

Poster session Thursday

13:30	<p>SIMULATION AND PREDICTION OF PHASE EVOLUTION FOR ULTRA-DEEP OIL FROM LOWER CAMBRIAN STRATA OF THE TARIM BASIN: PRACTICE AND IMPLICATIONS - Y. Wang^{1*}, C. Chen¹, R. Deng¹, H. Zhang² ¹Guangzhou Institute of Geochemistry (Chinese Academy of Sciences); ²Research Institute of Petroleum Exploration and Development (PetroChina Tarim Oilfield Company)</p> <p>Back to the future: Comparing Pleistocene to modern amino acid isotopic compositions to reveal woolly mammoth dietary niche - R. Schwartz-Narbonne^{1,2*}, G. Zazula³, F.J. Longstaffe² ¹Sheffield Hallam University; ²Department of Earth Sciences; ³Government of Yukon - Department of Tourism & Culture (Palaeontology Program)</p> <p>GEOCHEMICAL AND PETROGRAPHIC EVALUATION OF THE HYDROCARBON GENERATION POTENTIAL FROM THE IRATI FORMATION, SOUTH BRAZIL - M. Santos^{1*}, W. Kalkreuth¹, G. Link¹, J. Vargas¹, M. Bicca¹, T. Silva¹ ¹Federal University of Rio Grande do Sul</p> <p>IDENTIFYING MICROORGANISMS AND SOIL-STABILIZING ORGANIC MATRICES IN EVAPORITIC SOIL CRUSTS OF THE ATACAMA DESERT - H. Mißbach^{1*}, I. Prater¹, K. Koenig¹, D. Friedrich¹, C. Heim¹ ¹University of Cologne</p> <p>Climatic seasonality captured by lacustrine shales at the Upper Carboniferous and the earliest European appearance of oleanane. - J. Dąbek-Głowacka^{1*}, K. Jurek² ¹Institute of Geological Sciences - Jagiellonian University; ²AGH University of Science and Technology</p> <p>COMPARISON OF RESPONSE BETWEEN 3-OH-FA_s AND br-GDGT ALONG A EASTERN HIMALAYAN ELEVATION TRANSECT - P. Sanyal^{1*}, R. Sen¹, U.N. Guria¹ ¹Indian Institute Of Science Education And Research Kolkata</p> <p>SMART SOLUTIONS FROM MUD GAS GEOCHEMISTRY: PREDICTION OF PROPERTIES OF NATURALLY AND ARTIFICIALLY ALTERED FLUIDS - D. Strapoc^{1*} ¹SLB</p> <p>RICE PRODUCTION ALTERS ORGANIC CARBON CYCLING IN THE GANGES-BRAHMAPUTRA-MEGHNA RIVER BASIN - B. Boehman^{1*}, C. Hein², K. French³, S. Phelps³, A. Pearson⁴, V. Galy¹ ¹Woods Hole Oceanographic Institution; ²Virginia Institute of Marine Sciences; ³United States Geological Survey; ⁴Harvard University</p> <p>LONG-TERM WARMING EXPERIMENT IN PEATLAND: IMPLICATIONS FOR BRANCHED GDGT PROXIES - N. Ofiti², A. Huguet^{1*}, P.J. Hanson, G.L.B. Wiesenberg ¹UMR METIS, CNRS/Sorbonne Université/EPHE; ²University of Zurich, Dept of Geography; ³Environmental Sciences Division and Climate Change Science Institute</p> <p>Quantifying Microplastics abundance and their implications as vectors for heavy metal adsorption in freshwater aquatic system of Kashmir Himalaya - S. Kumar^{1*}, K. Ajay¹, B. Diptimayee¹, A. Yaseen², K. Balasubramanian³, S.U. Bhat², A. Jehangir², A. Ambili¹ ¹Indian institute of science education and research Mohali; ²University of Kashmir; ³Agharkar Research Institute</p> <p>SOURCE AND GENESIS OF THE LOW-MATURE OIL IN THE LIXIAN SLOPE OF THE RAOYANG SAG, BOHAI BAY BASIN - J. Liu^{1*}, S. Li¹, S. Deng¹ ¹China University of Petroleum</p> <p>AMBER DITERPENOID DISTRIBUTIONS AS A KEY TO IDENTIFY CHEIROLEPIDIACEAE, AN EXTINCT MAJOR CONIFER FAMILY - A. Fradet^{1*}, P. Adam¹, P. Schaeffer¹, B. Gomez² ¹University of Strasbourg; ²University of Lyon 1</p> <p>ADVANCES IN GEOCHEMICAL INVESTIGATIONS OF STRAY GAS MIGRATION INCIDENTS - F. Baldassare^{1*}, E. Chapman¹ ¹ECHOLON Applied Geochemistry</p> <p>Position-Specific Carbon Isotope Modeling and Measurements of Phytane - P. Volante¹, J. Drozd¹, K. Freeman^{1*} ¹Pennsylvania State University</p> <p>PALEOENVIRONMENTAL AND MATURITY INTERPRETATIONS FROM COALS OF THE MAASTRICHTIAN GUADUAS FORMATION, COLOMBIAN ANDES - J.F. Sanabria Vargas^{1*}, J.S. Gomez Neita¹, A.M. Pimentel Mizusaki¹, T. Freitas Da Silva¹, S.P. Aranha Da Paz², D.E. Vega Porras², D.A. Dueñas Torres³, M. Müller Bicca¹, H. Anzolin¹, A.L. Batista de Lima¹ ¹Federal University of Rio Grande do Sul; ²Federal University of Pará; ³Pedagogic and Technologic University of Colombia</p> <p>IDENTIFICATION OF H-GDGT SYNTHESIS PROTEINS - A. Garcia¹, G. Liman², K. Fluke², S. Davidson², T. Santangelo², G. Chadwick³, P. Welander^{1*} ¹Stanford University; ²Colorado State University; ³University of California Berkeley</p> <p>Depositional history of the Tarfaya, SW Morocco: Evidence from XRF scanner-derived elemental records and bulk carbonate stable isotopes - E.H. Chellai^{1*}, M. Aquit¹ ¹Marrakech University</p> <p>Generation and application of hydrocarbons preserved in the closed pores from the Jurassic Formation, Sichuan Basin - F. Liu^{1*}, Y. Han¹ ¹China University of Geosciences (Wuhan)</p> <p>Late acquisition of rTCA cycle by Chlorobi informed by 13C-depleted fossil carotenoids - X. Zhang^{1,2*}, M. Paoletti¹, G. Izon¹, G. Fournier¹, R. Summons¹ ¹Massachusetts Institute of Technology; ²Shanghai Jiao Tong University</p> <p>Geochemistry and phytoplankton community shifts in the early Toarcian: A biomarker approach from the North West German basin - T. Marten^{1*}, J. Mutterlose², W. Ruebsam¹, L. Schwark¹ ¹Kiel University; ²Bochum University</p> <p>COMPARING CHANGES IN FUNCTION AND STRUCTURE BETWEEN THE GOLAN AND OTHER MARINE ECOSYSTEMS FOLLOWING THE KPg MASS EXTINCTION - S. Patra^{1,2}, A. Amrani¹, Y. Rosenberg² ¹Hebrew University of Jerusalem; ²Geological Survey of Israel</p>
--------------	---

Poster session Thursday	
13:30	<p>ASSESSING THE BIOLOGICAL AND ENVIRONMENTAL DRIVERS OF A MAJOR SILURIAN MARINE CARBON ISOTOPE EXCURSION - N. Marshall^{1*}, G. Love¹, B. Cramer² ¹University of California; ²University of Iowa</p> <p>CLOSED RETORT THERMAL EXTRACTION: NEW TECHNIQUES FOR OIL-SOURCE CORRELATIONS AND A CASE STUDY FROM THE POWDER RIVER BASIN, WY - A. Zumberge^{1*}, A. Turner¹, C. Donohue¹, J. Zumberge¹ ¹GeoMark Research</p> <p>THE LORRAINE CARBONIFEROUS BASIN (FRANCE) AS A NEW TARGET OF REGIONAL GAS RESOURCE FOR THE ENERGY TRANSITION STRATEGY? - S. ALLOUT^{1*}, R. MICHELS¹, F. MALARTRE¹, M. MOMBO MOUKETO¹, Y. GERAUD¹, F. NASSIF², J. PIRONON¹, P. De DONATO¹ ¹Université de Lorraine; ²La Française de l'Energie</p> <p>MOLECULAR GEOCHEMISTRY CHARACTERIZATION OF UPPER-TRIASSIC TO TOARCIAN SOURCE ROCKS IN THE IONIAN ZONE, GREECE - I. Alexandridis¹, L. Schwark^{2*} ¹Christian Albrechts University of Kiel; ²Curtin University</p> <p>Evolution of biomarkers maturity parameters in the Mesoproterozoic black shale - S. Ma^{1*}, S. Zhang¹, J. Su¹, X. Wang¹, K. He¹ ¹Research Institute of Petroleum Exploration and Development - Petrochina</p> <p>MOLECULAR RECORDS OF THE TRIASSIC-JURASSIC AND THE EARLY TOARCIAN CLIMATE EVENTS AT THE LAND-SEA INTERFACE - W. Ruebsam^{1*}, L. Schwark¹ ¹University Of Kiel</p> <p>DEVELOPMENT OF 3-OH-FA-BASED PROXY CALIBRATIONS FOR LAKES AND SOILS IN SOUTHEAST ASIA - P. Chaiseanwang^{1*}, J. Bendle¹, K. Yamoah², A. Jirapinyakul³, C. Hou¹, D. Fallows¹ ¹University Of Birmingham; ²University of York; ³Chulalongkorn University</p> <p>SULFUR AND CARBON EVOLUTION IN THE MARINE SEDIMENTS OF GUAYMAS BASIN (GULF OF CALIFORNIA) USING ROCK-EVAL THERMAL ANALYSIS - P. Dodinet^{2*}, I. Kowalewski¹, E. Kohler¹, H. Ravelojaona¹, M. Tellez¹, I. Levêque¹, V. Lamoureux-Var¹, A. Riboulleau² ¹IFP Energies Nouvelles; ²Lille University</p> <p>SEARCH FOR THE SOURCE ROCKS IN THE TURIJA OIL FIELD REGION (SE PANNONIAN BASIN, SERBIA) - J. Stevanovic¹, N. Vukovic², D. Gross³, R. Sachsenhofer³, A. Kostic², I. Kojic², K. Stojanovic^{2*} ¹STC-NIS Naftagas; ²University of Belgrade; ³Montanuniversität Leoben</p> <p>INTEGRATE TIME-LAPSE GAS GEOCHEMISTRY AND EOS MODELING TO EVALUATE DESORBED GAS IN UNCONVENTIONAL RESERVOIRS - P. Luo^{1*} ¹Saudi Aramco</p> <p>PALAEOENVIRONMENTAL IMPLICATIONS OF AMBERS IN THE EOCENE LIGNITE FROM THE SHENBEI COALFIELD, NORTHEAST CHINA - B. Liu^{1*}, A. Bechtel², C. Zhao¹, D. Gross², X. Guo¹, Q. Zhao¹ ¹Hebei University Of Engineering; ²Montanuniversität</p> <p>Sources and distribution of glycerol dialkyl glycerol tetraethers (GDGTs) in tropical estuaries, Gulf of Guinea, West Africa. - U. Umoh^{1,2*}, L. Li², J. Wang², N. Kauluma³, F. Asuquo⁴, E. Akpan⁴, I. Oyo-ita⁴, O. Oyo-ita⁴ ¹Saint Mary's University; ²Tongji University; ³Lilongwe University of Agriculture and Natural Resources; ⁴University of Calabar</p>
PASTEUR ROOM	
<p>Carbon Cycle Session Chair: W. Liu (MARUM—Center for Marine Environmental Sciences, University of Bremen)</p>	
15:00	<p>Assessing the relationships between Saharan dust deposition, phytoplankton response and carbon export in the Mediterranean Sea - A. Van Boxtel^{1,2*}, A. Rice², G. De Lange², J. Stuut^{1,3}, F. Peterse² ¹NIOZ Royal Netherlands Institute for Sea Research; ²Utrecht University; ³Vrije Universiteit Amsterdam</p>
15:20	<p>The green Baltic Sea: A basinwide spread of cyanobacterial blooms in the Holocene Baltic Sea - T. Bauersachs^{1*}, L. Schwark² ¹Heidelberg University; ²Christian-Albrechts-University</p>
15:40	<p>RECONSTRUCTING PCO2 IN THE DEEP GEOLOGICAL PAST USING A GENERAL PHYTOPLANKTON BIOMARKER - O. Graham^{1*}, C. Witkowski¹, K. Littler², D. Naafs¹ ¹University Of Bristol; ²University of Exeter</p>
16:00	<p>Coffee Break (Thu PM)</p>
EINSTEIN ROOM	
<p>Paleoclimate & Environment 2 Session Chair: G.L.B. Wiersenberg (University of Zurich)</p>	
15:00	<p>LAST ~100 KA OF THE CRETACEOUS CHARACTERISED BY GLOBAL WARMING - L. O'Connor^{1*}, R. Jerrett¹, G. Price², S. Lengger³, B. Van Dongen¹ ¹University Of Manchester; ²University of Plymouth; ³Silicon Austria Labs</p>
15:20	<p>INTENSE EROSION EVENT THAT TRANSFERRED TERRESTRIAL CARBON TO THE OCEAN FOLLOWING THE CRETACEOUS/PALEOGENE BOUNDARY - C. Sosa Montes de Oca^{1*}, J. Witts¹, C.E. Myers², C.M. Lowery², M.P. Garb⁴, J. Naujokaityte², N.H. Landman⁵, C. Pietsch⁶, B.D.A. Naafs¹, R.D. Pancost¹ ¹University of Bristol; ²University of New Mexico; ³University of Texas; ⁴Brooklyn College; ⁵American Museum of Natural History; ⁶San Jose State University</p>
15:40	<p>LONG-TERM CLIMATE EVOLUTION OF THE NORTHWEST PACIFIC REGION FROM THE LATE EARLY PLIOCENE (4 MA) TO PRESENT - A. Jonas^{1*}, M. Kars², T. Bauersachs¹, L. Schwark^{1,3} ¹Christian Albrechts University of Kiel; ²Kochi University; ³Curtin University</p>

Oral Presentations | Thursday 14 September

Polar Environments Session Chair: S. Brassell (Indiana University)		Pyrogenic Carbon Session Chair: N. Bale (Royal Netherlands Inst. for Sea Research (NIOZ))	
16:30	DIFFERENTIATING BETWEEN ANCIENT AND MODERN ORGANIC PROCESSES USING LIPID BIOMARKERS IN ANTARCTIC PERMAFROST - M. Verret ^{1,2*} , S. Naeher ³ , D. Lacelle ⁴ , C. Ginnane ³ , W. Dickinson ² , K. Norton ² , J. Turnbull ³ , R. Levy ^{2,3} ¹ The University Centre In Svalbard; ² Victoria University in Wellington; ³ Institute of Geological and Nuclear Sciences; ⁴ University of Ottawa	16:30	Quantification and compound specific stable carbon isotope analysis of dissolved black carbon in the Atlantic Ocean - N. Davtian ^{1*} , N. Penalva-Arias ¹ , O. Teruel-Cabello ¹ , P. Comes-Bordas ¹ , A. Rosell-Melé ^{1,2} , J. Villanueva-Ribes ¹ ¹ ICTA-UAB; ² ICREA
16:50	SEDIMENTARY ORGANIC MATTER COMPOSITION AND TRANSPORT ACROSS THE BEAUFORT SHELF (CANADIAN ARCTIC) - L. Bröder ^{1,2*} , L. Bigler ¹ , M. O'Regan ³ , M. Fritz ⁴ , T. Tesj ⁵ , B. Juhls ⁴ , A. Eulenburg ⁴ , T. Priest ⁶ , A. Matsuoka ⁷ , A. Pellerin ⁸ , T. Bossé-Demers ⁹ , D. Rudbäck ³ , N. Haghypour ¹ , T. Eglinton ¹ , P. Overduin ⁴ , J. Vonk ² , J. Lattaud ¹ ¹ ETH Zürich; ² Vrije Universiteit Amsterdam; ³ Stockholm University; ⁴ Alfred Wegener Institute Helmholtz Centre for Polar and Marine Research; ⁵ National Research Council (Institute of Polar Sciences); ⁶ Max-Planck-Institute for Marine Microbiology; ⁷ University of New Hampshire; ⁸ Université du Québec à Rimouski; ⁹ Université Laval	16:50	TRACING ORGANIC MATTER DERIVED FROM AUSTRALIAN DUST AND BUSHFIRES IN NEW ZEALAND USING LIPID BIOMARKERS - S. Naeher ^{1*} , P.M. Novis ² , P. Davy ¹ , B.R.T. Simoneit ³ , M. Campbell ⁴ , P. Grierson ⁵ , A. Baker ⁴ , J.E. Hunt ² ¹ GNS Science; ² Manaaki Whenua-Landcare Research; ³ Oregon State University; ⁴ University of New South Wales; ⁵ University of Western Australia
17:10	POLYCYCLIC AROMATIC HYDROCARBONS (PAH) RECORD CONTRIBUTIONS OF TERRIGENOUS ORGANIC MATTER FROM ANGIOSPERMS AND PALAEOFIRES - K. Doiron ^{1*} , S. Brassell ¹ , P. Bijl ² , T. Wagner ³ , J. Herrle ⁴ , G. Uenzelmann-Neben ⁵ , S. Bohaty ⁶ , L. Childress ⁷ , IODP Expedition 392 Science Party ⁸ ¹ Indiana University; ² Utrecht University; ³ Heriot-Watt University; ⁴ Goethe University; ⁵ Alfred Wegener Institute; ⁶ Heidelberg University; ⁷ Texas A&M University; ⁸ Various	17:10	INCORPORATION OF NITROGEN AND SULFUR IN PYROGENIC DISSOLVED ORGANIC MATTER - H. Hamontree ^{1*} , P. Hatcher ¹ ¹ Old Dominion University
17:35	Geochemical Society OGD Treibs Award		



PLENARY	
08:45	Announcements (Fri)
PASTEUR ROOM	EINSTEIN ROOM
High Resolution Analytical Methods	Sulfur in Petroleum Systems
Session Chair: S. Poetz (Helmholtz Centre Potsdam, GFZ German Research Centre for Geosciences)	Session Chair: A. Amrani (Hebrew University of Jerusalem)
08:50	08:50
Millimetre-scale biomarker heterogeneity in lacustrine shale identifies the nature of signal-averaging and periodic euxinia - H. Xu ^{1,2,3,4} , D. Hou ² , S. Lohr ^{3,5} , Q. Liu ^{1,4,6} , Z. Jin ^{1,4,6} , J. Shi ² , X. Liang ⁶ , C. Niu ² , S. George ^{3*} ¹ State Key Laboratory of Shale Oil and Gas Enrichment Mechanisms and Effective Development; ² China University of Geosciences (Beijing); ³ Macquarie University; ⁴ SINOPEC; ⁵ University of Adelaide; ⁶ Peking University	VOLATILE ORGANIC SULFUR COMPOUNDS AS A NOVEL PROXY FOR GAS-SOURCE ROCK CORRELATIONS: ORDOS BASIN, CHINA, AS A TEST CASE - I. Kutuzov ^{1*} , C. Cai ² , A. Amrani ¹ ¹ The Hebrew University Of Jerusalem; ² Institute of Geology and Geophysics
09:10	09:10
PROTEINS IN THE GEOLOGICAL RECORD UNDER A DIAGENETIC FRAMEWORK: INSIGHTS FROM PY-GC x GC-TOFMS - R. Umamaheswaran ¹ , S. Dutta ^{1*} , G. Prasad ² , M.A. Khan ³ , S. Kumar ¹ , H. Singh ⁴ ¹ Indian Institute Of Technology Bombay; ² University of Delhi; ³ Siddho-Kanho-Birsa University; ⁴ Birbal Sahni Institute of Palaeobotany	APPLICATION OF $\delta^{34}\text{S}$ VALUES TO OIL-GAS-SOURCE ROCK CORRELATIONS AND TSR ALTERATIONS FROM TARIM AND SICHUAN BASINS - C. Cai ^{1*} , I. Kutuzov ² , D. Wang ³ , A. Amrani ² ¹ Chinese Academy of Sciences; ² The Hebrew University of Jerusalem; ³ China University of Geosciences
09:30	09:30
MOLECULAR CHARACTERIZATION OF GLOECAPSOMORPHA PRISCA MICROFOSSILS BY MASS SPECTROMETRY DOWN TO THE CELLULAR SCALE - M. Bon ^{1*} ¹ Lille University	ORGANIC MATTER SULFURIZATION AND POTENTIAL MARINE INCURSIONS IN THE JOGGINS FORMATION (WESTPHALIAN CARBONIFEROUS), NOVA SCOTIA, CANADA - G.T. Ventura ^{1*} , R.A. MacRae ¹ , Y. Owino ¹ ¹ Saint Mary's University
09:50	09:50
ADVANCING BIOGEOCHEMICAL INTERPRETATION AND CHEMICAL LABILITY ASSESSMENTS OF AQUATIC, SOIL, AND OIL ORGANIC MATTER BY FT-ICR MS - J. D'Andrilli ^{1*} , C. Romero ² , P. Zito ³ , D. Podgorski ³ , R. Payn ⁴ , S. Sebestyen ⁵ , A. Zimmerman ⁶ , F. Rosario-Ortiz ⁷ ¹ Louisiana Universities Marine Consortium; ² University of Lethbridge; ³ University of New Orleans; ⁴ Montana State University; ⁵ Northern Research Station USDA Forest Service; ⁶ University of Florida; ⁷ University of Colorado Boulder	EFFECT OF THERMAL MATURITY AND THERMOCHEMICAL SULFATE REDUCTION ON CARBON ISOTOPES OF HYDROCARBON IN SULFURIC SYSTEM - N. Lababidi ^{1*} , M. Alrowaie ¹ ¹ Saudi Aramco
10:10	10:10
Coffee Break (Fri AM)	
Plenary 09	
Session Chair: J. Groninga (Marum – Center For Marine Environmental Sciences)	
10:45	10:45
INTERPRETING THE MOLECULAR RECORD IN EXTRAORDINARILY PRESERVED CONCRETION FOSSILS: MIMICKING MICROBIAL FOSSILISATION OF MODERN GINKGO LEAVES AND TRUE FERN FRONDS - K. Grice ^{1*} , H. Vijay ¹ , A. Elson ¹ , M. Tripp ¹ , M. Coolen ¹ , A. Holman ¹ , C. Wuchter ¹ , N. Dhami ¹ ¹ Curtin University	
11:10	11:10
A diamondoids-based maturity calibration using naturally occurring petroleum fluids - R. Van der Ploeg ^{1*} , J. Pureveen ¹ , S. Van den Boorn ¹ , P. Van Bergen ² ¹ Shell Global Solutions International B.V.; ² Shell Research Ltd.	
11:35	11:35
INTRAMOLECULAR CARBON ISOTOPE ANALYSIS OF PHYTOL USING ORBITRAP MASS SPECTROMETRY - M. Öztoprak ^{1*} , E. Hopmans ¹ , M. Van der Meer ¹ , S. Schouten ^{1,2} , L. Villanueva ^{1,2} ¹ Royal Netherlands Institute for Sea Research (NIOZ); ² Utrecht University	
12:00	12:00
Closing Ceremony, Pieter Schenck Award and 32nd IMOG 2025 Introduction	



EAGE EVENT APP

Make your attendance even better with the Event App!
By downloading the App you can:

- Access the extended abstracts
- View the list of exhibitors
- Network with fellow delegates
- Social programme information
- Travel advice
- And more!

Scan the appropriate QR code for your device to download the App.



IOS



Android

You will need an event code and a personal 4-digit PIN code to open the Event App (only at the first login).

Event code: IMOG2023

PIN code: You can find it on your "Be well prepared" e-mail.

CREDENTIALS

You are required to wear your name badge at all times. Use of a badge by a person not named on the badge is grounds for confiscation.

SOCIAL MEDIA

Please follow us on X @EAOGNews and LinkedIn @European Association of Organic Geochemists and @EAGE using #IMOG2023 to get the latest updates about this conference.

HEALTH & SAFETY

In case of emergency, always follow the instructions given by the staff of the venue and/ or (emergency) services. Use the emergency exits to leave the building. Stay calm and avoid panic. Please refer to the Event App for the Emergency Response Card.

CATERING

Coffee/tea breaks and lunch are included in the registration fee for all registered delegates and will be served at the Exhibition.

WI-FI

Wifi name and log in at LE CORUM is IMOG2023

SOCIAL PROGRAMME

Icebreaker Reception

Le Corum

Sunday 10 September 2023

18:00 – 20:00 hrs

Join us for the opening of IMOG 2023, meet with exhibitors, catch up with fellow delegates and expand your network while enjoying food and drinks.

Cultural Event

Please see the event app or website for more details on this year's Cultural Event location.

Tuesday 12 September 2023

19:00 – 20:00 hrs

The Cultural Evening offers you the chance to share a drink and wind down after a very busy conference schedule.

Conference Evening

Château de Pouget

Wednesday 13 September 2023

19:30 – 01:00 hrs

The conference evening will be hosted at a historical château where we will enjoy local food and drinks. Don't forget to bring your dancing shoes for the dance party!

Please arrive to the bus departure point by 18:45, buses will depart at 19:00. Buses will depart the Conference Evening at the following times: 23:00, 00:00 and 01:00. All buses must be filled to leave the venue.

Don't forget to bring your badge to all Social Programme events to gain access!

SPONSORS

Platinum sponsor



Gold sponsors



Bronze sponsors

Baker Hughes 



equinor 

EXHIBITORS





CONTACT US FOR MORE INFORMATION
EUROPE@EAGE.ORG • WWW.IMOGCONFERENCE.ORG